







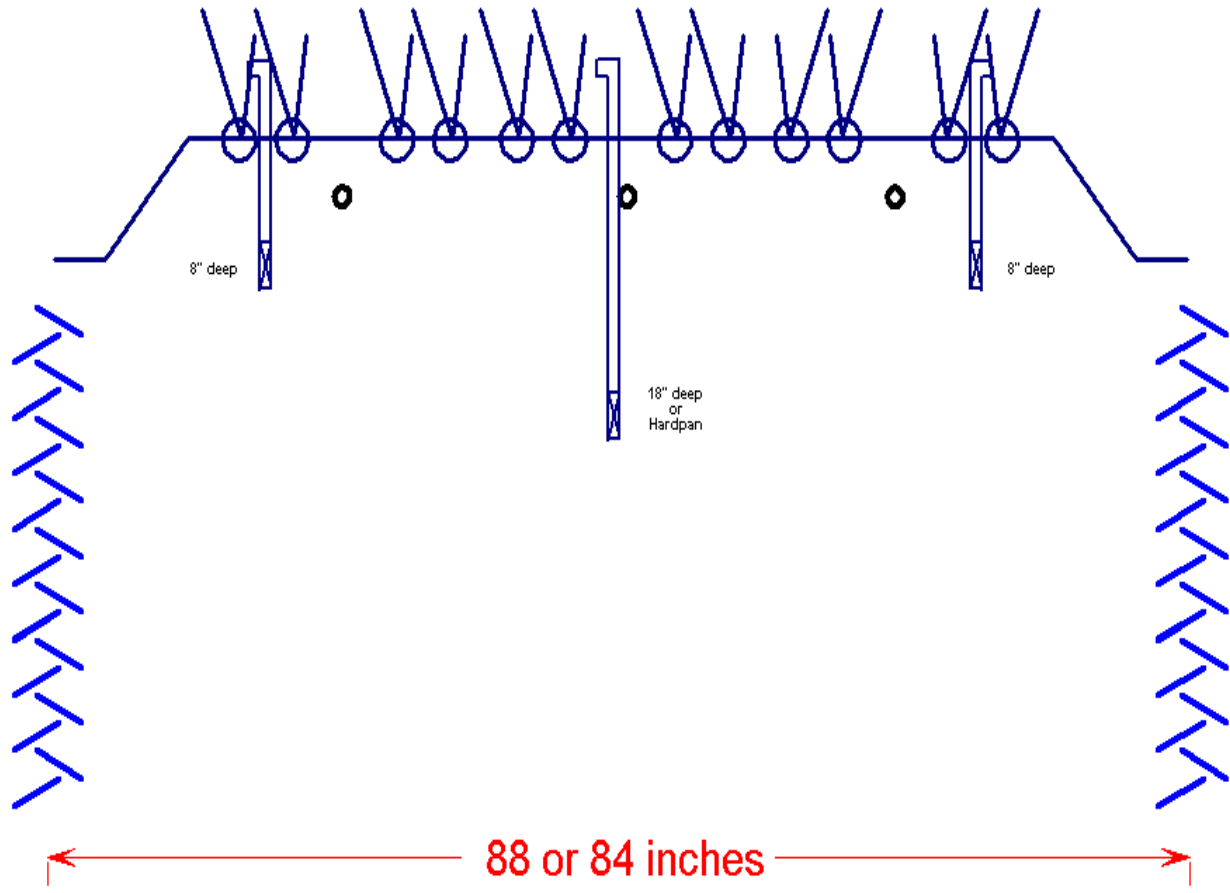
SI 12C 16C0

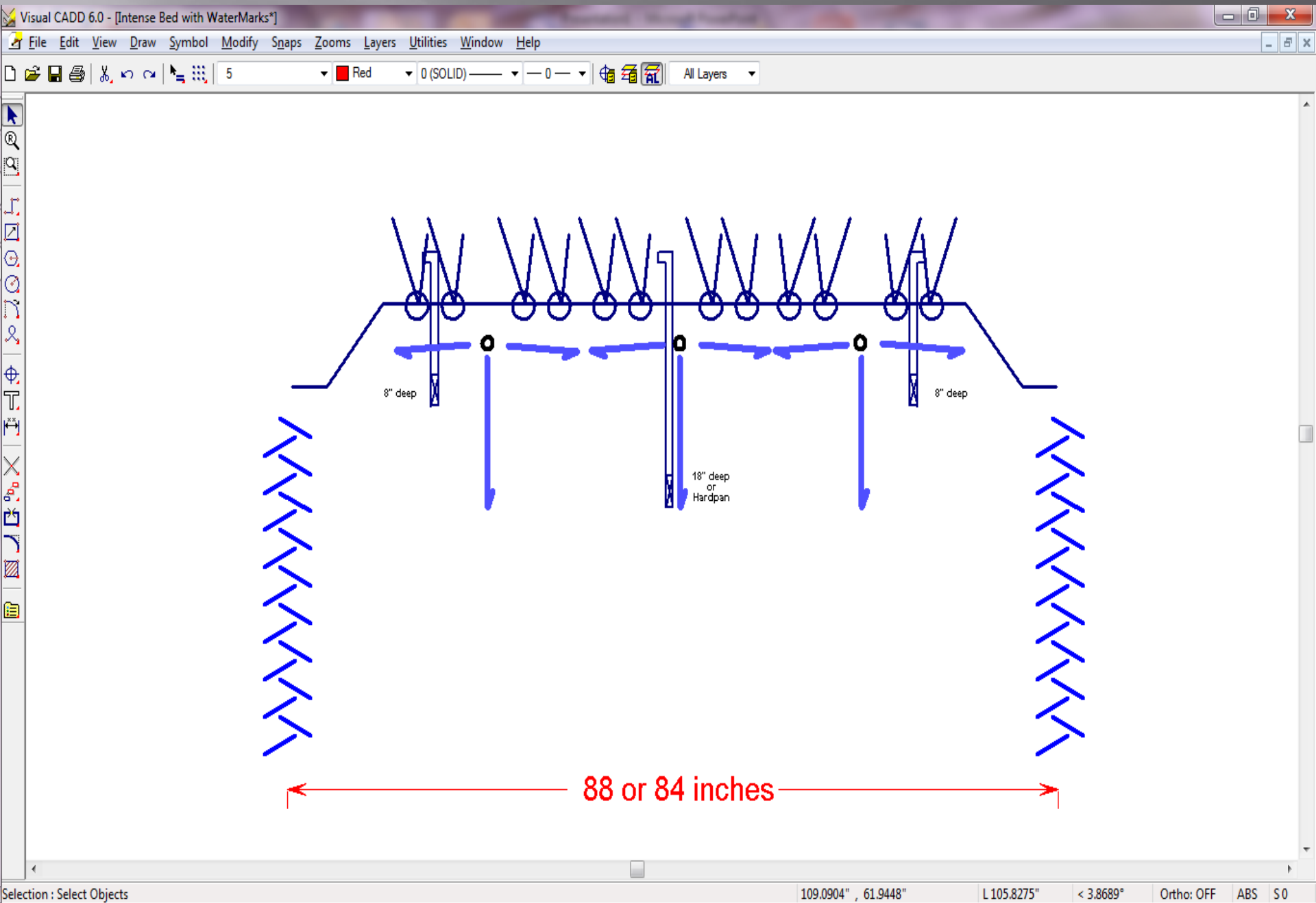












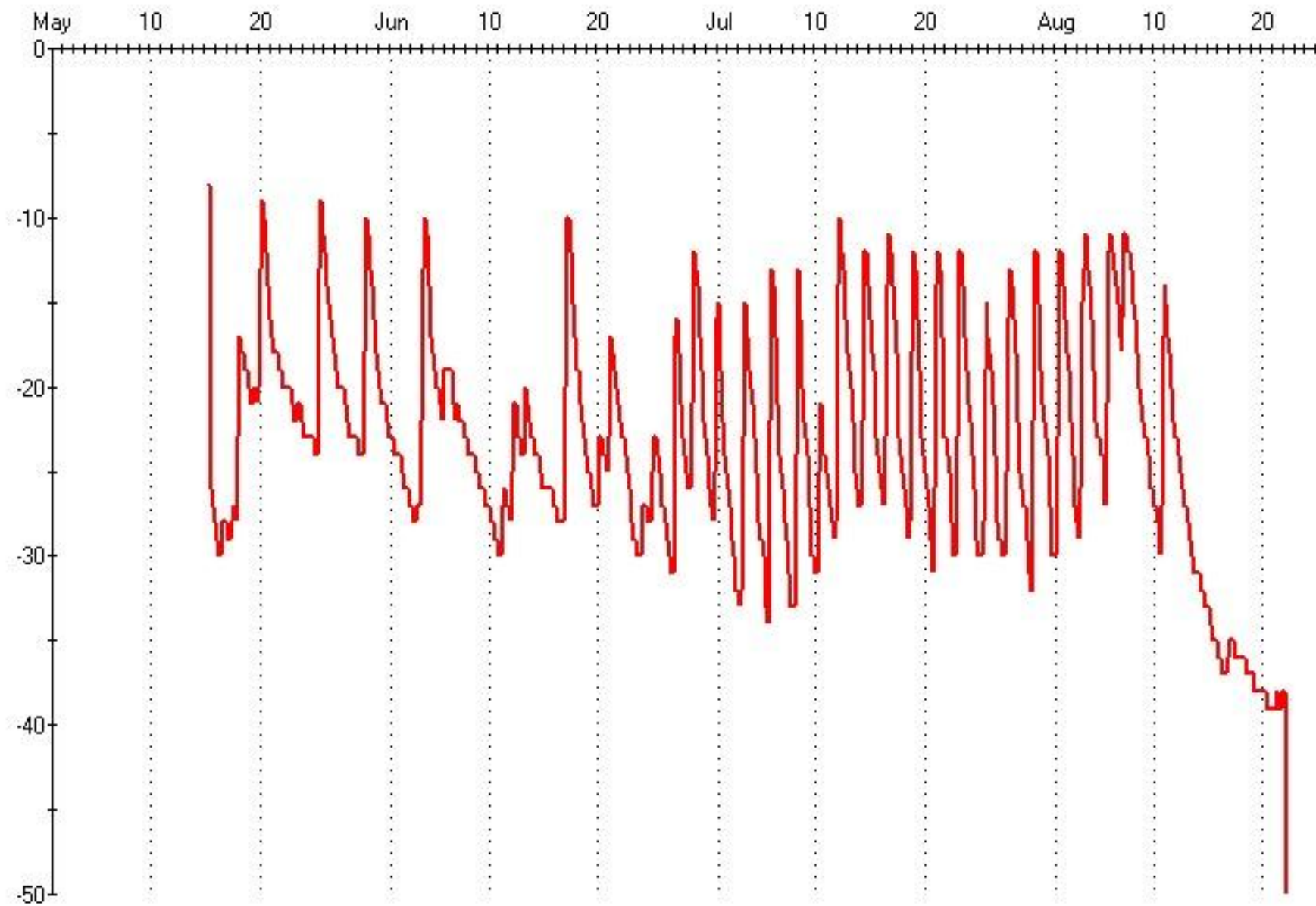














# Clearwater Supply

2/4/2007

Date =====>      August 24    August 25    August 26    August 27    Today's  
    Thur.      Fri.      Sat.      Sun.      Forecast  
    Mon.

Onion Et (in.)  
 =====>      0.25      0.30      0.35      0.40      0.45

Tape flow	Tape Spacing	Hours of Run Time per set				
170	28	3.6	4.3	5.0	5.7	6.4
170	29.3	3.7	4.5	5.2	6.0	6.7
220	29.3	2.9	3.5	4.0	4.6	5.2
220	40	3.9	4.7	5.5	6.3	7.1
220	42	4.1	5.0	5.8	6.6	7.4
220	44	4.3	5.2	6.1	6.9	7.8
220	48	4.7	5.7	6.6	7.6	8.5
220	67.2	6.6	7.9	9.3	10.6	11.9
340	44	2.8	3.4	3.9	4.5	5.0

Confirmation of actual field moisture level should be made routinely by soil moisture monitors and/or sampling by hand. Do not rely solely upon Et values as various individual field factors, such as soil type, variety, direction of slope and planting date, can alter anticipated results.

Calculations based on AgriMet data, available at  
<http://www.usbr.gov/pn/agrimet/chart/ontoch.txt>, based on an onion emergence date of 4/10/06 at the Malheur Experiment Station (Ontario, OR).



