





[Organization](#) [Membership](#) [Education](#) [Policy](#) [Media](#) [Helpful Links](#) [NAAIC](#)

Welcome to the National Alfalfa & Forage Alliance

Mission and Objective

NAFA's mission is to ensure the ability of all segments of the alfalfa and forage industry to compete effectively and profitably, domestically and abroad.

The objective of NAFA is to be a forum for consensus building among the various stakeholders and to be an effective advocate on behalf of the alfalfa and forage industry.



NAFA News

NAFA board members Chad Staudinger, Drex Gauntt featured on Ag PhD Radio.

[*Click here to listen*](#)

Sen. Moran's Alfalfa Crop Ins. Amendment Passes Senate

[*Click here to view Sen. Moran's floor speech in support of alfalfa*](#)

GROWER OPPORTUNITY ZONES

[*Click for more information*](#)

National Alfalfa & Forage Alliance Events

[*Click for more information*](#)



Organization Membership Education Policy Media Helpful Links NAAIC

[About NAFA](#)
[Board of Directors](#)
[Organization Chart](#)
[Annual Report 07-08](#)
[Annual Report 08-09](#)
[Annual Report 09-10](#)
[Annual Report 10-11](#)
[Annual Report 11-12](#)
[Annual Report 12-13](#)
[Annual Report 13-14](#)
[Offices / Staff](#)

Welcome to the National Alfalfa & Forage Alliance

Mission and Objective

mission is to ensure the ability of all segments
 and forage industry to compete effectively and
 profitably, domestically and abroad.

The objective of NAFA is to be a forum for consensus building
 among the various stakeholders and to be an effective advocate
 on behalf of the alfalfa and forage industry.

NAFA News

**NAFA board members Chad
 Staudinger, Drex Gauntt
 featured on Ag PhD Radio.**

[Click here to listen](#)

**Sen. Moran's Alfalfa Crop Ins.
 Amendment Passes Senate**

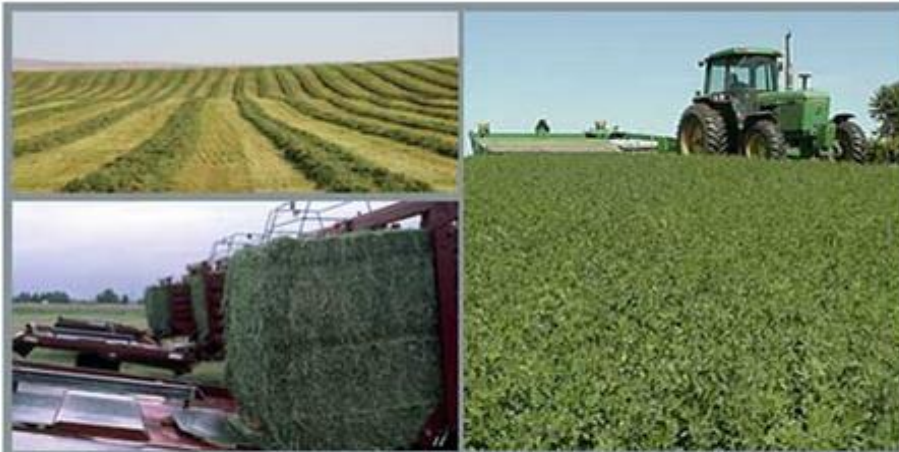
[Click here to view Sen. Moran's floor speech
 in support of alfalfa](#)

**GROWER OPPORTUNITY
 ZONES**

[Click for more information](#)

**National Alfalfa & Forage
 Alliance Events**

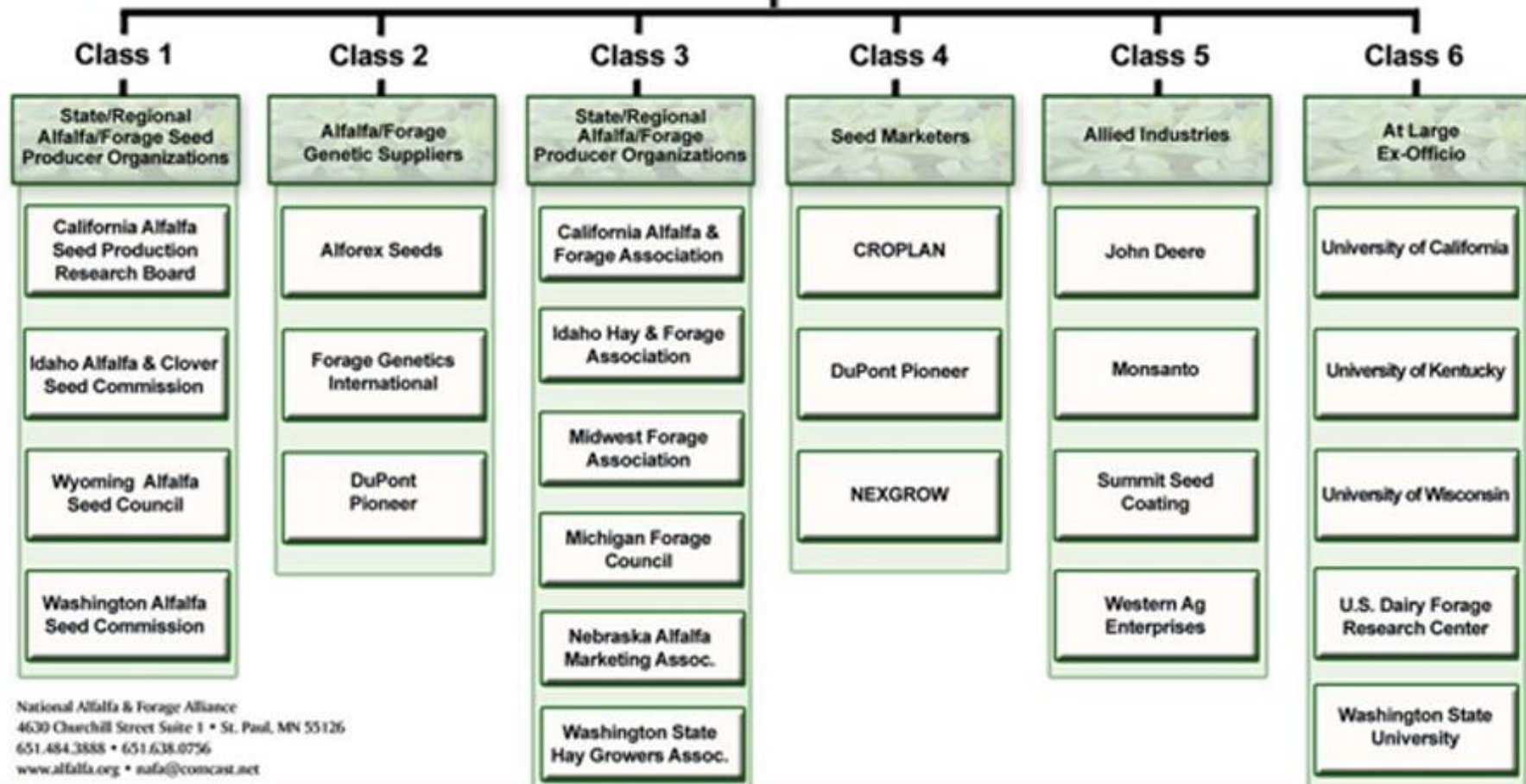
[Click for more information](#)





NAFA BOARD OF DIRECTORS ORGANIZATION CHART

**Note: There is no hierarchy within each class*





[Organization](#)
[Membership](#)
[Education](#)
[Policy](#)
[Media](#)
[Helpful Links](#)
[NAAIC](#)

[About NAFA](#)
[Board of Directors](#)
[Organization Chart](#)
[Annual Report 07-08](#)
[Annual Report 08-09](#)
[Annual Report 09-10](#)
[Annual Report 10-11](#)
[Annual Report 11-12](#)
[Annual Report 12-13](#)
[Annual Report 13-14](#)
[Offices / Staff](#)

Welcome to the National Alfalfa & Forage Alliance

Mission and Objective

The mission is to ensure the ability of all segments
 of the alfalfa and forage industry to compete effectively and
 profitably, domestically and abroad.

The objective of NAFA is to be a forum for consensus building
 among the various stakeholders and to be an effective advocate
 on behalf of the alfalfa and forage industry.

NAFA News

**NAFA board members Chad
 Staudinger, Drex Gauntt
 featured on Ag PhD Radio.**

[Click here to listen](#)

**Sen. Moran's Alfalfa Crop Ins.
 Amendment Passes Senate**

[Click here to view Sen. Moran's floor speech
 in support of alfalfa](#)

GROWER OPPORTUNITY ZONES

[Click for more information](#)

National Alfalfa & Forage Alliance Events

[Click for more information](#)





NAFA - Year in Review

National Alfalfa & Forage Alliance 2013-2014 Annual Report

Moran Earns NAFA's Top Honor

For his efforts in securing valuable research funding for the Alfalfa Forage Research Program (AFRP) and in bringing recognition to the need for an improved alfalfa insurance program, as well as for his dedication to the nation's alfalfa and alfalfa forage systems producers, Senator Jerry Moran (R-KS) was awarded NAFA's inaugural Outstanding Service Award which recognizes and rewards significant contributions to the industry.

Senator Moran was presented with the award during his visit as the featured guest at NAFA's D.C. Fly-In during which he discussed the importance of alfalfa to the nation's beef and dairy producers and his continued commitment to AFRP research funding.



Senator Jerry Moran (R-KS)

NAFA Holds 4th Annual D.C. Fly-In

For the fourth year in a row, NAFA members traveled to Washington, D.C., to meet with lawmakers to discuss issues related to alfalfa and alfalfa forage systems. NAFA met with staff of House and Senate Ag Committee members, House and Senate Ag Appropriations Committee members; EPA; the U.S. Trade Representative for Ag Affairs; USDA's Risk Management Agency; National Ag Statistics Service; Research, Education, & Economics Office; and Agricultural Research Service.

In total, NAFA representatives attended more than 100 meetings scheduled over the course of the 4-day event to promote NAFA objectives, educate Congressional members on the issues important to the alfalfa industry, and continue to build awareness and recognition of the nation's 3rd most valuable crop.

In meetings with staff of House and Senate Ag Committee members, NAFA members focused on the lack of an adequate safety net for alfalfa producers and the need for a crop insurance program which gives producers the option of insuring themselves against

losses in revenue and/or quality. In both the Senate and House versions of the Farm Bill, program crops continue to maintain protection under the newly created "shallow loss" programs (Agriculture Risk Coverage in the Senate version and Price Loss Coverage and Revenue Loss Coverage in the House version). However, none of these programs cover alfalfa, making the need for adequate crop insurance products more critical.

NAFA members also met with staff of both the House and Senate Ag Appropriations Committees addressing the need for parity with other major crops through public research conducted by both the Agricultural Research Service (ARS) and land grant universities through the National Institute of Food & Agriculture (NIFA).

In addition to Congressional meetings, NAFA met with: 1) Environmental Protection Agency to maintain communication about crop protection tools for the alfalfa seed industry; 2) the U.S. Trade Representative for Ag Affairs regarding low level presence tolerance issues and asynchronous regulatory approval of new traits in key export markets; 3) USDA's Risk Management Agency to discuss the creation of new and/or improved crop insurance options for alfalfa producers; 4) USDA's National Ag Statistics Service to talk about how to improve alfalfa yield statistics; 5) USDA's Research, Education, & Economics Office and Agricultural Research Service to discuss how best to use limited alfalfa research funding to keep alfalfa competitive with other cropping choices.

The 4th annual "Alfalfa on the Hill: Bluegrass Style" reception was a highlight of the event as Congressional members and their staff joined NAFA members to visit informally about industry issues. The reception featured an alfalfa-intensive 'grazing' menu including lamb chops, mini cheeseburgers, beef nega maki, assorted cheeses, vegetables with alfalfa sprout dip, and ice cream bars.

NAFA Summer Board Meeting Held in Boise, ID

The National Alfalfa & Forage Alliance board of directors met in downtown Boise, ID, for its annual summer board meeting. In conjunction with the June 25-26 meeting, board members were also treated to a guided tour of one of its member facilities - Summit Seed Coatings.

Special guest Tom Bewick, National Program Leader of the Division of Plant Systems Production at USDA's National Institute of Food and Agriculture (NIFA), joined the NAFA board to discuss the implementation of the newly funded Alfalfa Forage Research Program (AFRP). Bewick is responsible for the program's administration.

NAFA meeting sponsors included Alforex Seeds; DuPont Pioneer; Forage Genetics International; Monsanto; and Summit Seed Coatings. J.R. Simplot generously offered the use of its facilities and served as host for NAFA's 2014 summer board meeting.



Senator Patty Murray (D-WA) with
NAFA Director Mark Wagoner.



[Organization](#)
[Membership](#)
[Education](#)
[Policy](#)
[Media](#)
[Helpful Links](#)
[NAAIC](#)

[About NAFA](#)
[Board of Directors](#)
[Organization Chart](#)
[Annual Report 07-08](#)
[Annual Report 08-09](#)
[Annual Report 09-10](#)
[Annual Report 10-11](#)
[Annual Report 11-12](#)
[Annual Report 12-13](#)
[Annual Report 13-14](#)
[Offices / Staff](#)

Welcome to the National Alfalfa & Forage Alliance

Mission and Objective

The mission is to ensure the ability of all segments
 of the alfalfa and forage industry to compete effectively and
 profitably, domestically and abroad.

The objective of NAFA is to be a forum for consensus building
 among the various stakeholders and to be an effective advocate
 on behalf of the alfalfa and forage industry.

NAFA News

**NAFA board members Chad
 Staudinger, Drex Gauntt
 featured on Ag PhD Radio.**

[Click here to listen](#)

**Sen. Moran's Alfalfa Crop Ins.
 Amendment Passes Senate**

[Click here to view Sen. Moran's floor speech
 in support of alfalfa](#)

**GROWER OPPORTUNITY
 ZONES**

[Click for more information](#)

**National Alfalfa & Forage
 Alliance Events**

[Click for more information](#)





[Organization](#) [Membership](#) [Education](#) [Policy](#) [Media](#) [Helpful Links](#) [NAAIC](#)

NAFA OFFICES / STAFF

[About NAFA](#)

[Board of Directors](#)

[Organization Chart](#)



Main Office - St. Paul

4630 Churchill Street, #1
St. Paul, MN 55126
Phone: 651.484.3888
Fax: 651.638.0756

nafa@alfalfa.org

www.alfalfa.org www.alfalfa-forage.org

Beth Nelson

President

Jon Dockter

Associate Director

Sherry Liu

IT Director

Chelsea Russell

Event Coordinator

Katie Hammitt

Office Manager

NAFA Western Office

100 N. Fruitland, Suite B
Kennewick, WA 99336
Phone: 509.585.5460
Fax: 509.585.2671

*The Western Office is responsible for
Training & Education Programs*

Shane Johnson

Executive Secretary

Sheri Nolan

Publications Director

4630 Churchill Street, #1 | St. Paul, MN 55126 | Phone: 651.484.3888 | Fax: 651.638.0756



[Organization](#)
[Membership](#)
[Education](#)
[Policy](#)
[Media](#)
[Helpful Links](#)
[NAAIC](#)

[Brochure](#)

[Members / Affiliates](#)

Welcome to the National Alfalfa & Forage Alliance

Mission and Objective

NAFA's mission is to ensure the ability of all segments of the alfalfa and forage industry to compete effectively and profitably, domestically and abroad.

The objective of NAFA is to be a forum for consensus building among the various stakeholders and to be an effective advocate on behalf of the alfalfa and forage industry.



NAFA News

NAFA board members Chad Staudinger, Drex Gauntt featured on Ag PhD Radio.

[Click here to listen](#)

Sen. Moran's Alfalfa Crop Ins. Amendment Passes Senate

[Click here to view Sen. Moran's floor speech in support of alfalfa](#)

GROWER OPPORTUNITY ZONES

[Click for more information](#)

National Alfalfa & Forage Alliance Events

[Click for more information](#)



Thanks to our MEMBERS!

Visit Member websites by clicking on underlined names.

DIAMOND - \$20,000+

Alforex Seeds
DuPont Pioneer
Forage Genetics International
Monsanto

PLATINUM - \$10,000 - \$19,999

America's Alfalfa
California Alfalfa Seed Production Research Board
CROPLAN®
DEKALB®
NEXGROW
Washington Alfalfa Seed Commission
W-L Research

GOLD - \$5,000 - \$9,999

Idaho Alfalfa & Clover Seed Commission
John Deere
S & W Seed Co.
Summit Seed Coatings
Western Ag Enterprises

SILVER - \$1,500 - \$4,999

California Alfalfa & Forage Association
Idaho Hay & Forage Association
JR Simplot
Kansas Forage & Grassland Council
MacDon Industries Ltd.
Midwest Forage Association
Montana Alfalfa Seed Committee
Nebraska Alfalfa Marketing Association
Nevada Alfalfa Seed Commission
Washington State Hay Growers Association
Wyoming Alfalfa Seed Council

ASSOCIATE - \$500 - \$1,499

American Seed Trade Association
Anderson Hay & Grain Co.
Calibrate® Technologies
FMC
Harvest Tec
Hayday Farms Inc.
Michigan Forage Council
Monsanto BioAg
Nelson Irrigation Corporation
New Mexico Hay Association
Oregon Hay & Forage Association
San Joaquin Valley Hay Growers Association
The Samuel Roberts Noble Foundation



[Organization](#)
[Membership](#)
[Education](#)
[Policy](#)
[Media](#)
[Helpful Links](#)
[NAAIC](#)

Welcome to the

Alliance

Mission and

NAFA News

[AITS Training](#)

[Publications](#)

[Coexistence Documents](#)

[Alfalfa Variety Ratings](#)

[Alfalfa Variety Ratings Searchable Database](#)

[NAFA's CSP Webinar](#)

[NAFA's Alfalfa Seed Insurance Pilot Program Webinar](#)

NAFA's mission is to ensure the ability of all segments of the alfalfa and forage industry to compete effectively and profitably, domestically and abroad.

The objective of NAFA is to be a forum for consensus building among the various stakeholders and to be an effective advocate on behalf of the alfalfa and forage industry.

NAFA board members Chad Staudinger, Drex Gauntt featured on Ag PhD Radio.

[Click here to listen](#)

Sen. Moran's Alfalfa Crop Ins. Amendment Passes Senate

[Click here to view Sen. Moran's floor speech in support of alfalfa](#)

GROWER OPPORTUNITY ZONES

[Click for more information](#)

National Alfalfa & Forage Alliance Events

[Click for more information](#)



Alfalfa Intensive Training Seminar
Bloomington, Minnesota • November 18-20, 2014

AGENDA

Tuesday, November 18

1:00	Welcome, Seminar Orientation and Overview	Garry Lacefield
1:10	History and Importance	Garry Lacefield
1:30	Genetics, Variety Testing and Variety Selection	Dan Undersander
2:45	Seed and Seed Production	Marvin Hall
3:15	Break	
3:30	Gene Flow in Alfalfa Seed and Forage Production	Dan Undersander
4:15	Growth and Development	Marvin Hall
5:30	Adjourn	

Wednesday, November 19 morning

8:00	Soils, Fertility and Manure Management	Marvin Hall
9:00	Establishment	Garry Lacefield
10:00	Break	
10:15	Irrigation and Water Use	Dan Undersander
10:45	Pest Management	Dan Undersander
12:15	Lunch	

Wednesday, November 19, afternoon

1:00	Quality Terms and Definitions	Neal Martin
1:30	Production Management	Garry Lacefield
1:50	Harvesting: Options, Losses, and Decisions	Neal Martin
2:45	Break	
3:00	Mowing and Field Drying	Marvin Hall
3:30	Silage Preservation	Neal Martin
4:10	Hay Preservation	Dan Undersander
4:40	Grazing	Garry Lacefield



Organization Membership Education Policy Media Helpful Links NAAIC

Welcome to the

Alliance

Mission and

NAFA News

[AITS Training](#)

[Publications](#)

[Coexistence Documents](#)

[Alfalfa Variety Ratings](#)

[Alfalfa Variety Ratings Searchable Database](#)

[NAFA's CSP Webinar](#)

[NAFA's Alfalfa Seed Insurance Pilot Program Webinar](#)

NAFA's mission is to ensure the ability of all segments of the alfalfa and forage industry to compete effectively and profitably, domestically and abroad.

The objective of NAFA is to be a forum for consensus building among the various stakeholders and to be an effective advocate on behalf of the alfalfa and forage industry.

NAFA board members Chad Staudinger, Drex Gauntt featured on Ag PhD Radio.

[Click here to listen](#)

Sen. Moran's Alfalfa Crop Ins. Amendment Passes Senate

[Click here to view Sen. Moran's floor speech in support of alfalfa](#)

GROWER OPPORTUNITY ZONES

[Click for more information](#)

National Alfalfa & Forage Alliance Events

[Click for more information](#)



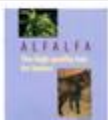




[Organization](#)
[Membership](#)
[Education](#)
[Policy](#)
[Media](#)
[Helpful Links](#)
[NAAIC](#)

PUBLICATIONS

Click image to view pdf format of publications.

	Publication	Price Per Publication	Quantity	Subtotal
<i>Minimum order quantity of the following NAFA publications is 25 (any combination)</i>				
	Alfalfa Variety Ratings Winter Survival Fall Dormancy & Pest Resistance Ratings for Alfalfa Varieties 2015 Edition	\$0.50	<input type="text" value="0"/>	\$ 0.00
	Alfalfa Germination & Growth	\$2.50	<input type="text" value="0"/>	\$ 0.00
	Alfalfa Analyst	\$2.00	<input type="text" value="0"/>	\$ 0.00
	Alfalfa for Profit	\$0.50	<input type="text" value="0"/>	\$ 0.00
	Alfalfa The High-Quality Hay for Horses	\$2.00	<input type="text" value="0"/>	\$ 0.00

[Organization](#)[Membership](#)[Education](#)[Policy](#)[Media](#)[Helpful Links](#)[NAAIC](#)

Welcome to the

Alliance

Mission and

NAFA News

NAFA's mission is to ensure the ability of all segments of the alfalfa and forage industry to compete effectively and profitably, domestically and abroad.

The objective of NAFA is to be a forum for consensus building among the various stakeholders and to be an effective advocate on behalf of the alfalfa and forage industry.

[AITS Training](#)[Publications](#)[Coexistence Documents](#)[Alfalfa Variety Ratings](#)[Alfalfa Variety Ratings Searchable Database](#)[NAFA's CSP Webinar](#)[NAFA's Alfalfa Seed Insurance Pilot Program Webinar](#)

NAFA board members Chad Staudinger, Drex Gauntt featured on Ag PhD Radio.

[Click here to listen](#)

Sen. Moran's Alfalfa Crop Ins. Amendment Passes Senate

[Click here to view Sen. Moran's floor speech in support of alfalfa](#)

GROWER OPPORTUNITY ZONES

[Click for more information](#)

National Alfalfa & Forage Alliance Events

[Click for more information](#)

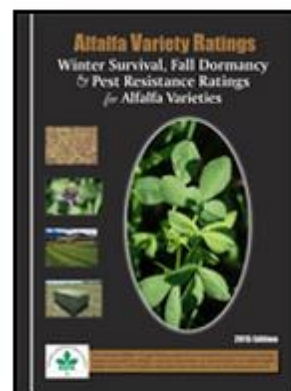


[Organization](#)[Membership](#)[Education](#)[Policy](#)[Media](#)[Helpful Links](#)[NAAIC](#)

Alfalfa Variety Leaflet

[Training](#)[Publications](#)

Download Adobe Acrobat
to view PDF documents.



"Alfalfa Variety Ratings
Winter Survival,
Fall Dormancy &
Pest Resistance Ratings
for Alfalfa Varieties"
2015 Edition

[Click here to view 2015 leaflet](#)

[Click to place order](#)

4630 Churchill Street, #1 | St. Paul, MN 55126 | Phone: 651.484.3888 | Fax: 651.638.0756

Winter Survival, Fall Dormancy & Pest Resistance Ratings for Alfalfa Varieties

Information is obtained from the Association of Official Seed Certifying Agencies (AOSCA) and the National Alfalfa Variety Review Board (NAVRB) report. Blank spaces indicate the variety has no approved rating through AOSCA.

Fall Dormancy (FD) Rating Descriptions

FD Rating	Description
1, 2	Very Dormant
3, 4	Dormant
5	Moderately Dormant
6, 7	Semi-Dormant
8, 9	Non-Dormant
10, 11	Very Non-Dormant

FD is the degree of fall alfalfa growth, as a response to temperature and day length. Lower dormancy ratings exhibit less fall growth, while higher dormancy ratings indicate greater fall growth. FD ratings are indices assigned by comparing the height of fall growth with standard check varieties, and tested across locations and years to accurately represent dormancy response across environments.

Resistance Ratings

% Resistant Plants	Resistance Class	Class Abbreviation
0-5%	Susceptible	S
6-14%	Low Resistance	LR
15-30%	Moderate Resistance	MR
31-50%	Resistance	R
>50%	High Resistance	HR

Winter Survival Ratings

Category	Check Variety	Score
Extremely Winterhardy	ZG 9830	1
Very Winterhardy	5262	2
Winterhardy	WL325HQ	3
Moderately Winterhardy	G-2852	4
Slightly Winterhardy	Archer	5
Non-Winterhardy	CUF 101	6

Variety	Contact for Marketing Information	= Fall Dormancy	= Winter Survival	= Bacterial Wilt	= Verticillium Wilt	= Fusarium Wilt	= Anthracnose Race 1	= Phytophthora Root Rot	= Aphanomyces Race 1 Root Rot	= Aphanomyces Race 2 Root Rot	= Spotted Alfalfa Aphid	= Pea Aphid	= Blue Alfalfa Aphid	= Potato Leafhopper	= Stem Nematode	= Southern Root Knot Nematode	= Northern Root Knot Nematode	= Multifoliolate Expression (H-High, M-Med, L-Low)	= Continuous Grazing Tolerance (Y-Yes)	= Standability Expression (R-Resistance)	= Salt Tolerance (G-Germplasm Source F-Forage)	= R-RRR; H-75-95% Hybrid
2010	Brett Young	2	2	HR	HR	HR	HR	HR	R													
3010	Brett Young	2	2	HR	HR	HR	HR	HR	HR	MR					R	R	HR					
Arrowhead II	Tri-West	2	2	HR	HR	HR	HR	HR	HR						HR	R	HR					
FSG 229CR	Farm Science	2	2	HR	HR	HR	HR	HR	R			MR			R		HR					
Ladak II	Allied	2	2	HR	MR	HR	MR	R			R				R		HR					

Marketers

Varieties are submitted by marketers and listing does not imply NAFA endorsement. Variety information in this publication is that which is submitted for certification.

Alforex Seeds

Leaflet Listing: Alforex Seeds
Jordan, MN 55352
877-560-5181
www.alforexseeds.com

Allied Seed, LLC

Leaflet Listing: Allied
Nampa, ID 83686
888-252-7573
www.alliedseed.com

America's Alfalfa

Leaflet Listing: America's Alfalfa
Nampa, ID 83653
800-873-2532
www.americasalfalfa.com

BrettYoung Seeds

Leaflet Listing: BrettYoung
Winnipeg, MB R3V 1L5
800-665-5015
www.brettyoung.ca

Channel

Leaflet Listing: Channel
St. Louis, MO 63167
314-694-2723
www.channel.com

Crop Production Services

Leaflet Listing: Dyna-Gro
Chaska, MN 55318
612-419-5274
www.dynagroseed.com

CROPLAN

Leaflet Listing: Croplan
St. Paul, MN 55164
800-426-8109
www.croplan.com

Dairyland Seed Co., Inc.

Leaflet Listing: Dairyland
West Bend, WI 53095
800-236-0163
www.dairylandseed.com

DEKALB

Leaflet Listing: DeKalb
St. Louis, MO 63167
314-694-2723
www.asgrowanddekalb.com

DuPont Pioneer

Leaflet Listing: Pioneer
Johnston, IA 50131
800-247-6803
www.pioneer.com

Eureka Seeds, Inc.

Leaflet Listing: Eureka
Woodland, CA 95776
530-661-6995
csharp@eurekaseeds.com

Farm Science Genetics

Leaflet Listing: Farm Science
Nampa, ID 83686
888-252-7573
www.farmsciencegenetics.com

Growmark FS

Leaflet Listing: Growmark
York, PA 17402
717-854-3818
www.fsseed.com

Imperial Valley Seeds, Inc.

Leaflet Listing: Imperial Valley
Sacramento, CA 95814
916-554-5480
www.imperialvalleyseeds.com

J.R. Simplot Company

Leaflet Listing: J.R. Simplot
Boise, ID 83707
208-672-2813
www.simplot.com

NEXGROW Alfalfa Seeds

Leaflet Listing: Nexgrow Alfalfa
Pocahontas, IA 50574
855-4NEXGROW
www.plantnexgrow.com

S & W Seed Co.

Leaflet Listing: S & W
Five Points, CA 93624
559-884-2535
www.swseedco.com

Southern States Cooperative

Leaflet Listing: SS
Richmond, VA 23230
804-281-1000
www.southernstates.com

Tennessee Farmers Cooperative

Leaflet Listing: TFC
LaVergne, TN 37086
615-793-8011
www.ourcoop.com

Tri-West, Inc.

Leaflet Listing: Tri-West
Twin Falls, ID 83303
208-731-1188
trwest@centurylink.net

Union Seed

Leaflet Listing: Union
Nampa, ID 83653
608-786-2121
dwhalen@foragegenetics.com

W-L Research

Leaflet Listing: W-L Research
Ozark, MO 65721
800-406-7662
www.wlresearch.com

Wilbur-Ellis Company

Leaflet Listing: Wilbur-Ellis
Sacramento, CA 95834
515-292-1300
www.integralseed.com

**Hay & Forage
Grower**

NAFA is proud to collaborate with Hay & Forage Grower on the distribution of its "Winter Survival, Fall Dormancy & Pest Resistance Ratings for Alfalfa Varieties" 2015 Edition.

"Winter Survival, Fall Dormancy & Pest Resistance Ratings for Alfalfa Varieties" 2015 Edition is a publication of the National Alfalfa & Forage Alliance and cannot be reproduced without prior written permission from NAFA.

Visit the NAFA website: www.alfalfa.org



[Organization](#)
[Membership](#)
[Education](#)
[Policy](#)
[Media](#)
[Helpful Links](#)
[NAAIC](#)

Welcome to the

Alliance

Mission and

NAFA News

[AITS Training](#)

[Publications](#)

[Coexistence Documents](#)

[Alfalfa Variety Ratings](#)

[Alfalfa Variety Ratings Searchable Database](#)

[NAFA's CSP Webinar](#)

[NAFA's Alfalfa Seed Insurance Pilot Program Webinar](#)

NAFA's mission is to ensure the ability of all segments of the alfalfa and forage industry to compete effectively and profitably, domestically and abroad.

The objective of NAFA is to be a forum for consensus building among the various stakeholders and to be an effective advocate on behalf of the alfalfa and forage industry.

NAFA board members Chad Staudinger, Drex Gauntt featured on Ag PhD Radio.

[Click here to listen](#)

Sen. Moran's Alfalfa Crop Ins. Amendment Passes Senate

[Click here to view Sen. Moran's floor speech in support of alfalfa](#)

GROWER OPPORTUNITY ZONES

[Click for more information](#)

National Alfalfa & Forage Alliance Events

[Click for more information](#)





New this year!

[Organization](#) [Membership](#) [Education](#) [Policy](#) [Media](#) [Helpful Links](#)

2015 "Alfalfa Variety Ratings" Searchable Database

Variety Name:

Marketer:

Fall Dormancy:

Winter Survival:

Bacterial Wilt:

Verticillium Wilt:

Fusarium Wilt:

Anthracnose Race 1:

Phytophthora Root Rot:

Aphanomyces Race 1:

Aphanomyces Race 2:

Spotted Alfalfa Aphid:

Pea Aphid:

Blue Alfalfa Aphid:

Potato Leafhopper:

Stem Nematode:

Southern Root Knot:

Northern Root Knot:

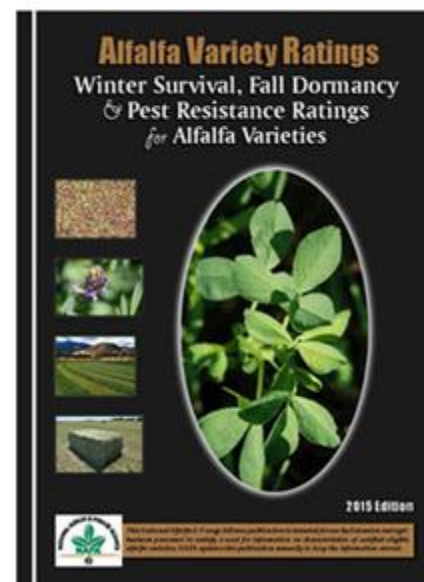
Multi Foliole Expression:

Continuous Grazing Tolerance:

Standability Expression:

Salt Tolerance:

Technology:





Organization Membership Education Policy Media Helpful Links NAAIC

Welcome to the

alliance

Mission and

[AITS Training](#)

[Publications](#)

[Coexistence Documents](#)

[Alfalfa Variety Ratings](#)

[Alfalfa Variety Ratings Searchable Database](#)

[NAFA's CSP Webinar](#)

[NAFA's Alfalfa Seed Insurance Pilot Program Webinar](#)

NAFA News

NAFA's mission is to ensure the ability of all segments of the alfalfa and forage industry to compete effectively and profitably, domestically and abroad.

The objective of NAFA is to be a forum for consensus building among the various stakeholders and to be an effective advocate on behalf of the alfalfa and forage industry.

NAFA board members Chad Staudinger, Drex Gauntt featured on Ag PhD Radio.

[Click here to listen](#)

Sen. Moran's Alfalfa Crop Ins. Amendment Passes Senate

[Click here to view Sen. Moran's floor speech in support of alfalfa](#)

GROWER OPPORTUNITY ZONES

[Click for more information](#)

National Alfalfa & Forage Alliance Events

[Click for more information](#)



[Organization](#)[Membership](#)[Education](#)[Policy](#)[Media](#)[Helpful Links](#)[NAAIC](#)[Bioenergy](#)[Biotechnology](#)[APHIS Amended Order](#)[Coexistence Forum »](#)[Coexistence Documents](#)[Supreme Court Ruling on](#)[Roundup Ready Alfalfa](#)[NAFA's Statement on](#)[Roundup Ready](#)[Grower Opportunity Zones](#)

NAFA Coexistence Documents

- [Coexistence Principles & Glossary of Terms](#) (NAFA, 2014)
- [Grower Opportunity Zones for Seed Production](#) (NAFA, 2014)
[Procedures for Forming a Grower Opportunity Zone](#) (NAFA, 2014)
- [Best Management Practices for Roundup Ready® Alfalfa Seed Production](#) (NAFA, 2014)
- [Best Management Practices for APS Alfalfa Seed Production](#) (NAFA, 2014)
- [Coexistence for Alfalfa Hay Export Markets](#) (NAFA, 2014)
- [Coexistence for Alfalfa Seed Export Markets](#) (NAFA, 2014)
- [Coexistence for Organic Alfalfa Seed and Hay Markets](#) (NAFA, 2014)
- [Gene Flow in Alfalfa: Biology, Mitigation, & Potential Impact on Production](#) (CAST, 2008)
[Electronic Version](#)
[Hardcopy Version](#)



[Organization](#)
[Membership](#)
[Education](#)
[Policy](#)
[Media](#)
[Helpful Links](#)
[NAAIC](#)

Welcome to the

alliance

Mission and

NAFA News

[AITS Training](#)

[Publications](#)

[Coexistence Documents](#)

[Alfalfa Variety Ratings](#)

[Alfalfa Variety Ratings Searchable Database](#)

[NAFA's C SP Webinar](#)

[NAFA's Alfalfa Seed Insurance Pilot Program Webinar](#)

NAFA's mission is to ensure the ability of all segments of the alfalfa and forage industry to compete effectively and profitably, domestically and abroad.

The objective of NAFA is to be a forum for consensus building among the various stakeholders and to be an effective advocate on behalf of the alfalfa and forage industry.

NAFA board members Chad Staudinger, Drex Gauntt featured on Ag PhD Radio.

[Click here to listen](#)

Sen. Moran's Alfalfa Crop Ins. Amendment Passes Senate

[Click here to view Sen. Moran's floor speech in support of alfalfa](#)

GROWER OPPORTUNITY ZONES

[Click for more information](#)

National Alfalfa & Forage Alliance Events

[Click for more information](#)





Persistence...
SUCCESS!

Forage Seed Insurance Pilot to Become Permanent Policy for 2015 Crop Year

In 2013, the pilot covered 27,700 acres and \$27.9 million in liability.

Producers are encouraged to visit with their agent to learn more about the permanent forage seed insurance policy.



[Organization](#)
[Membership](#)
[Education](#)
[Policy](#)
[Media](#)
[Helpful Links](#)
[NAAIC](#)

[Bioenergy](#)

[Biotechnology](#)

[D.C. Fly-In](#)

BIOENERGY

[Biotechnology](#)

Bioenergy

[Alfalfa/Corn Rotations](#)

[Workshop »](#)



Alfalfa/Corn Rotations... A Sustainable System to Produce Food, Feed, & Bioenergy

June 29-30, 2010
 Pioneer Hi-Bred Carver Center
 Johnston, Iowa



ORGANIZING SPONSORS:



PIONEER.

Genetic Advancement
Delivering Success™



NCGA

www.ncga.com





[Organization](#)
[Membership](#)
[Education](#)
[Policy](#)
[Media](#)
[Helpful Links](#)
[NAAIC](#)

[Bioenergy](#)

[Biotechnology](#)

[D.C. Fly-In](#)

Welcome to the National Alfalfa & Forage Alliance

Mission and Objective

NAFA's mission is to ensure the ability of all segments of the alfalfa and forage industry to compete effectively and profitably, domestically and abroad.

The objective of NAFA is to be a forum for consensus building among the various stakeholders and to be an effective advocate on behalf of the alfalfa and forage industry.



NAFA News

NAFA board members Chad Staudinger, Drex Gauntt featured on Ag PhD Radio.

[Click here to listen](#)

Sen. Moran's Alfalfa Crop Ins. Amendment Passes Senate

[Click here to view Sen. Moran's floor speech in support of alfalfa](#)

GROWER OPPORTUNITY ZONES

[Click for more information](#)

National Alfalfa & Forage Alliance Events

[Click for more information](#)

4630 Churchill Street, #1 | St. Paul, MN 55126 | Phone: 651.484.3888 | Fax: 651.638.0756



[Organization](#)
[Membership](#)
[Education](#)
[Policy](#)
[Media](#)
[Helpful Links](#)
[NAAIC](#)

[Bioenergy](#)

[Biotechnology](#)

[APHIS Amended Order](#)

[Coexistence Documents](#)

[Supreme Court Ruling on](#)

[Roundup Ready Alfalfa](#)

[NAFA's Statement on](#)

[Roundup Ready](#)

[Grower Opportunity Zones](#)



GROWER OPPORTUNITY ZONES & NON-GE SEED PRODUCTION AREAS

AP-SENSITIVE GOZ. This is a zone for seed production of APS alfalfa seed and conventional alfalfa seed. As outlined in *NAFA Best Management Practices for Roundup Ready Seed Production*, RRA seed production would not be allowed in an APS GOZ.

The following APS GOZs have been grower requested/approved - click to link to the GOZ map identifying GOZ boundaries for each:

[Parts of Canyon & Owyhee Counties, ID and Malheur County, OR](#) (January, 2012)
[Part of Park County, WY](#) (January, 2012)

GE GOZ. This is a zone for seed production of GE and conventional alfalfa seed that is destined for markets that are not APS. APS alfalfa seed production would not be practical in a GE GOZ. As outlined in *NAFA Best Management Practices for Roundup Ready Seed Production*, Association of Official Seed Certifying Agencies (AOSCA) certified seed production isolation requirements apply between GE and conventional seed within a GE GOZ. *NAFA Best Management Practices for Roundup Ready Seed Production* isolation requirements apply between a GE seed production field in a GE GOZ and the nearest conventional seed production field outside the GOZ border.

The following GE GOZs have been grower requested/approved - click to link to the GOZ map identifying GOZ boundaries for each:

[Part of Canyon County, ID](#) (July, 2011)
[Parts of Walla Walla County, WA & Umatilla County, OR](#) (July, 2011)
[Orovalley Valley, NV](#) (August, 2011)
[Lovelock Valley, NV](#) (August, 2011)
[Box Elder and Cache Counties, UT](#) (August, 2011)
[Jerome and Minidoka Counties and part of Twin Falls County, ID](#) (August, 2011)
[Oneida and Franklin Counties, ID](#) (August, 2011)
[Big Horn County, MT](#) (August, 2011)
[Washakie County, WY](#) (August, 2011)
[Part of Malheur County, OR](#) (September, 2011)
[Fremont County, WY](#) (September, 2011)
[Heart Mountain Area, WY](#) (December, 2011)
[Carbon County, MT](#) (January, 2012)
[Mesa County, CO](#) (September, 2012)
[Part of Canyon County, ID](#) (October, 2012)
[Rosebud and Treasure Counties, MT](#) (April, 2014)

NON-GE SEED PRODUCTION AREAS

Imperial Valley, California. The Imperial Valley of California is a large and concentrated alfalfa seed production area. In light of the unique growing circumstances in Imperial County and the current international approval status of RRA, Monsanto has worked with the Imperial County Farm Bureau and established unique stewardship requirements for RRA in Imperial County, which are set forth in the Monsanto Technology Use Guide and Monsanto Technology Stewardship Agreement. All alfalfa seed production in Imperial County currently meets the isolation standards for ASSP, making this a very favorable production area for non-dominant alfalfa seed destined for APS markets.



[Organization](#)
[Membership](#)
[Education](#)
[Policy](#)
[Media](#)
[Helpful Links](#)
[NAAIC](#)

[Bioenergy](#)
[Biotechnology](#)
[D.C. Fly-In](#)

NAFA



Each February, National Alfalfa & Forage Alliance members travel to Washington, D.C. to participate in NAFA's annual *D.C. Fly-In* where they meet with lawmakers to discuss issues related to alfalfa and alfalfa forage systems. Typically, NAFA meets with staff of House and Senate Ag Committee members, House and Senate Ag Appropriations Committees members, USDA, and other agencies as necessary.

NAFA representatives may attend more than 100 meetings scheduled over the course of the 4-day event to promote NAFA objectives, educate Congressional members on the issues important to the alfalfa industry, and continue to build awareness and recognition of the nation's 3rd most value crop.

[Click here](#) for D.C. Fly-In press release.



WA Senator Patty Murray with NAFA Director Mark Wagoner



KY Senator Mitch McConnell with NAFA Director Bill Talley



KS Senator Jerry Moran with NAFA Director Jeremy Larson



NAFA member John Grover with WY Senator John Barrasso



MN - Congressman Tim Walz



NAFA Board

Alfalfa: Not the Little Rascal You Remember



National Alfalfa & Forage Alliance 4th Annual D.C. Fly-In

Tuesday, February 11 - Thursday, February 13, 2014

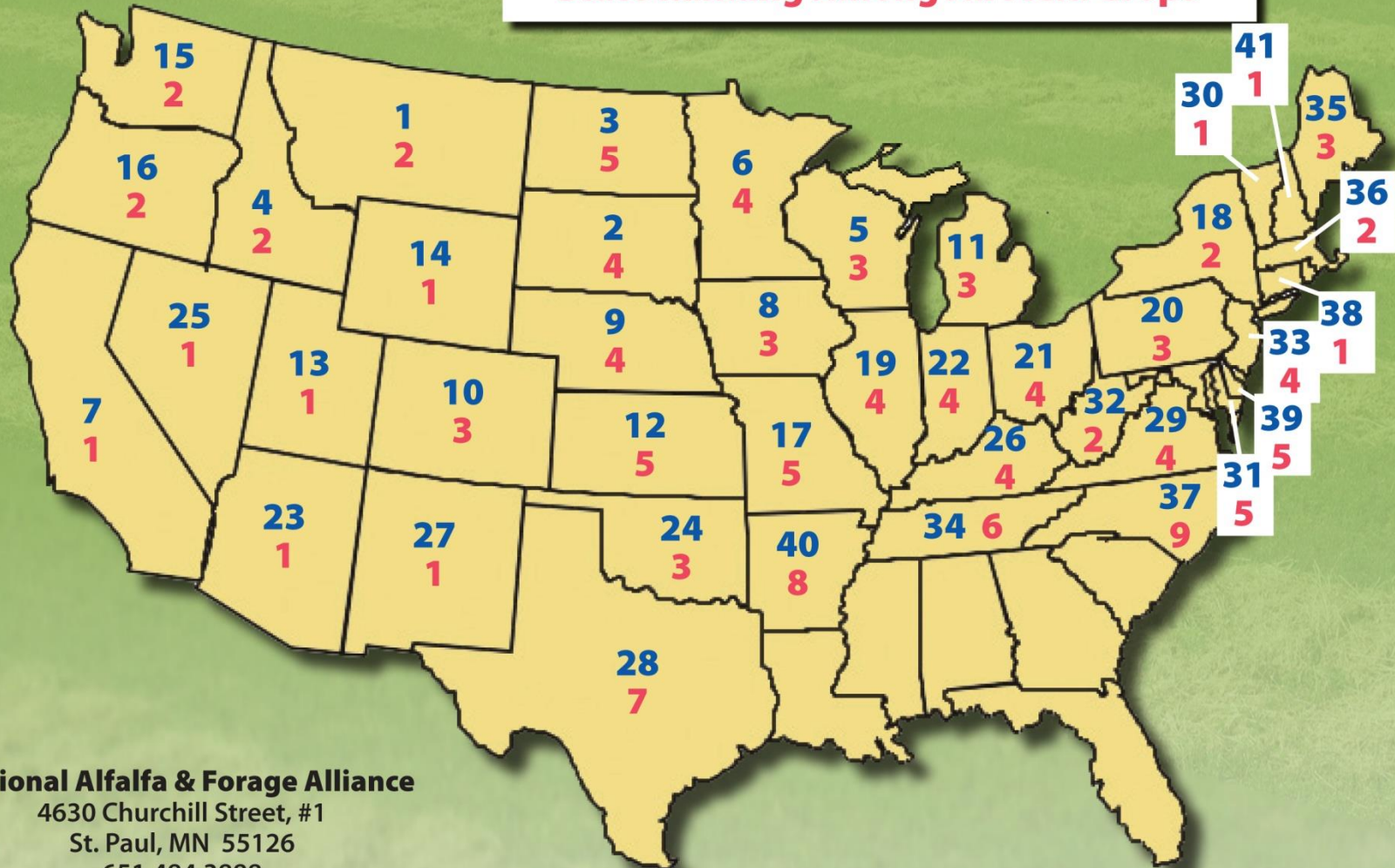
Alfalfa is key to sustainable agricultural systems and is an economic engine in rural communities - its value for soil conservation, nitrogen fixation, energy savings, crop rotation, and wildlife habitat is unsurpassed.

Alfalfa must offer a competitive value for farmers in order to provide these benefits and maintain or expand its acreage base. Being recognized in policy and research funding decisions is critical in keeping pace with other cropping choices.



Alfalfa Production Acreage

National Ranking
State Ranking Among All Field Crops



National Alfalfa & Forage Alliance

4630 Churchill Street, #1

St. Paul, MN 55126

651.484.3888

nafa@comcast.net

Source: USDA-NASS 2013 (blue); USDA-NASS 2012 (red)

\$13.5 billion in 2012

State Ranking Among All Field Crops



nafa@comcast.net

Source: USDA-NASS 2012

(Includes dry hay & haylage for CA, ID, IL, IA, KS, MI, MN, MO, NE, NM, NY, OH, PA, SD, TX, VT, WA, and WI.)

NAFA STRATEGIES & POLICY ISSUES

NAFA requests agencies use sound science in policy development and adhere to established comment procedures.

- **Alfalfa Safety Net**

- Forage Crop Insurance (enhance existing program; work with developers as they craft new revenue and quality policies)
- Title 1 status

- **Public Research**

- **ARS**

- Request continued support for U.S. Dairy Forage Research Center; hire new director
- Request continued support for St. Paul ARS Forage Unit (i.e., fill vacant positions)
- Request continued support for Logan ARS Units (Bee Lab & Forage Unit)
- Maintain support for Prosser position
- Establish two western positions to work in collaboration with the USDFRC

- **NIFA**

- Request reauthorization of Alfalfa and Forage Research Program in Farm Bill; seek funding
- Work with NIFA on land grant commitment to forages (i.e., fill vacant forage positions)
- Continue to work with NIFA on grant opportunities (similar to BRAG offering)

- **NASS Data**

- Secure value reporting for green chop/haylage
- Improve accuracy of alfalfa yield reporting (i.e., survey questions)

- **Assist in Establishing LLP Tolerances in Key Export Markets**

- When appropriate, work with ASTA, agencies and other national associations

- **Crop Protection Tools**

- Continue to work with EPA to support and maintain seed industry crop protection tools (*seed industry has non-food use status*)
- Continue to work with EPA to support and maintain forage crop protection tools

- **Miscellaneous**

- Maintain NRCS CSP language designating alfalfa as a “resource-conserving” crop
- Work with EPA on RFS2 certification
- Monitor the Endangered Species Act (ESA)



Persistence...
SUCCESS!

NAFA STRATEGIES & POLICY ISSUES

NAFA requests agencies use sound science in policy development and adhere to established comment procedures.

- **Alfalfa Safety Net**

- Forage Crop Insurance (enhance existing program; work with developers as they craft new revenue and quality policies)
- ~~Title 1 status~~

McConnell Includes Alfalfa Crop Insurance Language in Farm Bill's Manager's Report

Senator Mitch McConnell (R-KY) showed his support for alfalfa by inserting language in the Manager's Report of the 2014 Farm Bill. The language inserted appeared as follows:

"The Managers recognize alfalfa to be an important domestic forage crop valued for nitrogen fixation, soil conservation, crop rotation, and as a natural habitat. The Managers view alfalfa as having great potential for the national cash hay market and as an affordable means of supporting the forage and intensive grazing needs of the horse, cattle, and dairy sectors. However, from 2002 through 2011, alfalfa acreage has declined 15.7 percent, and in 2012 alone acreage declined an additional 10 percent. The Managers stress the importance of an alfalfa crop insurance policy to ensure that producers have the risk management protection that they need to produce this important crop. The Managers urge the Secretary to include information regarding regional differences in cultivation in the alfalfa crop insurance study."

Beginning Stages of a New Safety Net

Forage Seed Insurance Pilot Program to Become Permanent Policy



Persistence...
SUCCESS!

- **Public Research**

- **ARS**

- Request continued support for U.S. Dairy Forage Research Center; ~~hire new director~~
 - Establish two western positions to work in collaboration with the USDFRC
- Request continued support for St. Paul ARS Forage Unit (i.e., fill vacant positions)
- Request continued support for Logan ARS Units (Bee Lab & Forage Unit) (i.e., fill vacant positions)
 - ~~Work to restore seed grower funding from the Logan Bee Lab~~
- Maintain support for Prosser position

Success! ARS Hires Boggess as New U.S. Dairy Forage Research Center Director

NAFA's highest priority in terms of ARS was the appointment of a new Director for the U.S. Dairy Forage Research Center. NAFA worked with ARS in prioritizing this need. In May Dr. Mark Boggess was selected as the new Director.

Success! USDA-ARS Allocates \$100,000 for Alfalfa Pollinator Health Initiative

Project Title	Principal Investigator	Award
Effects of Pest Management Practices on Pests and Alfalfa Leafcutting Bees in Alfalfa Seed	Jim Barbour Univ. of Idaho	\$15,406
Understanding the Effects of Nutrition and Juvenile Hormone on Reproductive Output in Alkali Bees	Karen Kapheim Utah State Univ.	\$22,454
Probiotic Prospecting for Alfalfa Leafcutting Bees	Quinn McFrederick Univ. of California	\$18,894
Lethal and Sublethal Effects of a Systematic Pesticide on Alfalfa Leafcutter Bees	T'ai Roulston Univ. of Virginia	\$23,802
Enhancing and Protecting Populations of Alkali Bee <i>Nomia melanderi</i>	Doug Walsh Washington State Univ.	\$19,444



Persistence...
SUCCESS!

- **Public Research**

- **NIFA**

- ~~Request reauthorization of~~ Seek funding for Alfalfa and Forage Research Program in Farm Bill; seek funding
- Work with NIFA on land grant commitment to forages (i.e., fill vacant forage positions)
- Continue to work with NIFA on grant opportunities (similar to BRAG offering)

Success! \$1.35 Million in Research Funding

Thanks to the dedicated efforts of Senator Jerry Moran (R-KS).

The request for proposals for the AFRP was distributed in June and resulted in the collection of 23 proposals requesting more than \$3.7 million in funding.

AFRP Project Title	Principal Investigator	Award
The Effect of Hay Rake Type on Ash Content of Alfalfa Hay	Dan Undersander Univ. of Wisconsin	\$155,884
Developing an Alfalfa Hay Export Market in the Humid Eastern United States	Chris Teutsch Virginia Tech	\$156,140
Root Traits to Enhance Nutrient and Water Use in Alfalfa	Deborah Samac USDA-ARS	\$156,230
Subsurface Drip Irrigation, Deficit Irrigation Strategies, and Improved Varieties to Improve Alfalfa Water Use Efficiency Under Drought Conditions	Dan Putnam Univ. of California	\$156,254
Using a New In Vitro Method and Fiber Model (TTNDFD) to Improve Estimates of Digestibility of Alfalfa for Dairy Cattle	Dave Combs Univ. of Wisconsin	\$156,280
Nutritive Value and Forage Accumulation of Alfalfa and Alfalfa-Mixtures as Influenced by Forage Management	Renata La Guardia Nave Univ. of Tennessee	\$156,287
Yield Improvement and Fall Dormancy Characterization in Alfalfa	Charlie Brummer Univ. of California	\$156,287
Implementing Lygus Management Strategies in Alfalfa Seed Production	Doug Walsh Washington State Univ.	\$156,675

- **Emergency Forage Strategy**
- **NASS Data**
 - Secure value reporting for green chop/haylage
 - Improve accuracy of alfalfa yield reporting (i.e., survey questions)

- ~~**Assist in Establishing LLP Tolerances in Key Export Markets**~~

- ~~When appropriate, work with ASTA, agencies and other national associations~~

- **Maintain and Enhance Key Export Markets**

- When appropriate, work with ASTA, agencies, and other national associations to establish LLP tolerances

- Refine coexistence strategies, when appropriate, to meet requirements of key export markets

- **Crop Protection Tools**

- Continue to work with EPA to support and maintain seed industry crop protection tools (*seed industry has non-food use status*)
- Continue to work with EPA to support and maintain forage crop protection tools

- **Miscellaneous**

- Monitor the Endangered Species Act (ESA)
- Monitor RFS2 certification process

By collaborating together



We can achieve more!

Top Products for Alfalfa Seed Production

Insecticides		Herbicides		Fungicides	
1	Chlorpyrifos (Lorsban)	1	Paraquat dichloride (Paraquat)	1	Boscalid (Endura)
2	Dimethoate (Cygon 400)	2	Pendimethalin (Prowl)	2	Azoxystrobin (Quadris)
3	Lambda-cyhalothrin (Warrior)	3	Terbacil (Sinbar)	3	Pyraclostrobin (Headline)
4	Bifenthrin (Brigade)	4	Hexazinone (Velpar)	4	Pyraclostrobin & Boscalid (Prinstine)
5	Flonicamid (Beleaf)	5	Simazine (Simazine)		
6	Naled (Dibrom)	6	Quizalofop (Targa)		
7	Sulfoxaflor (Transform)	7	Clethodim (Select)		
8	Propargite (Comite)	8	Dichlorophenoxyacetic acid (2,4-D)		
9	Hexythiazox (Onager)	9	Glyphosate (Roundup)		
10	Indoxacarb (Steward)	10	Imazethapyr (Pursuit)		
11	Abamectin	11	Bromoxynil (Buctril)		
12	Acephate	12	Ethalfuralin (Sonalan)		
13	Acetamiprid (Assail)	13	Flumioxazin (Chateau)		
14	Methomyl (Lanate)	14	2,4-dichlorophenoxy butyric acid (2,4-DB)		
15	Pymetrozine (Fulfill)	15	4-dichlorophenyl, dimethylurea (Diuron)		