

Alfalfa Seed Growers' Survey

Benjamin Kelly, Jerry Neufeld
Winter Seed School
Caldwell, ID
January 9, 2018



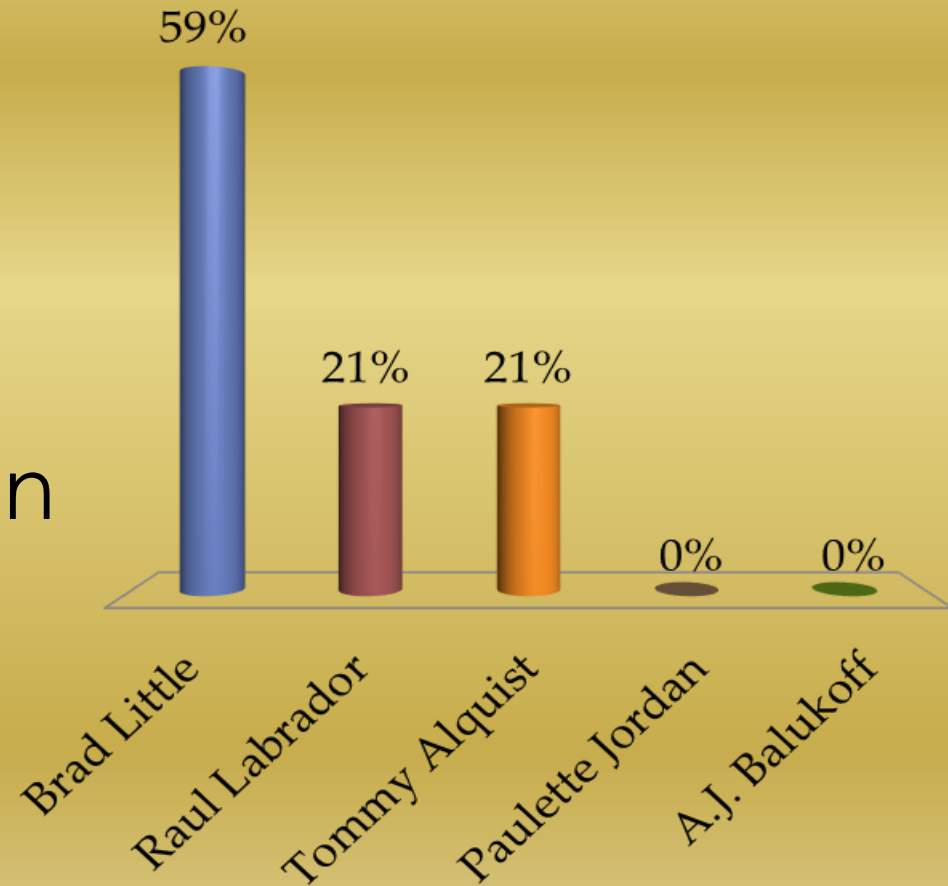
Plan Today

- We want to learn more about how things are being done in alfalfa seed production!



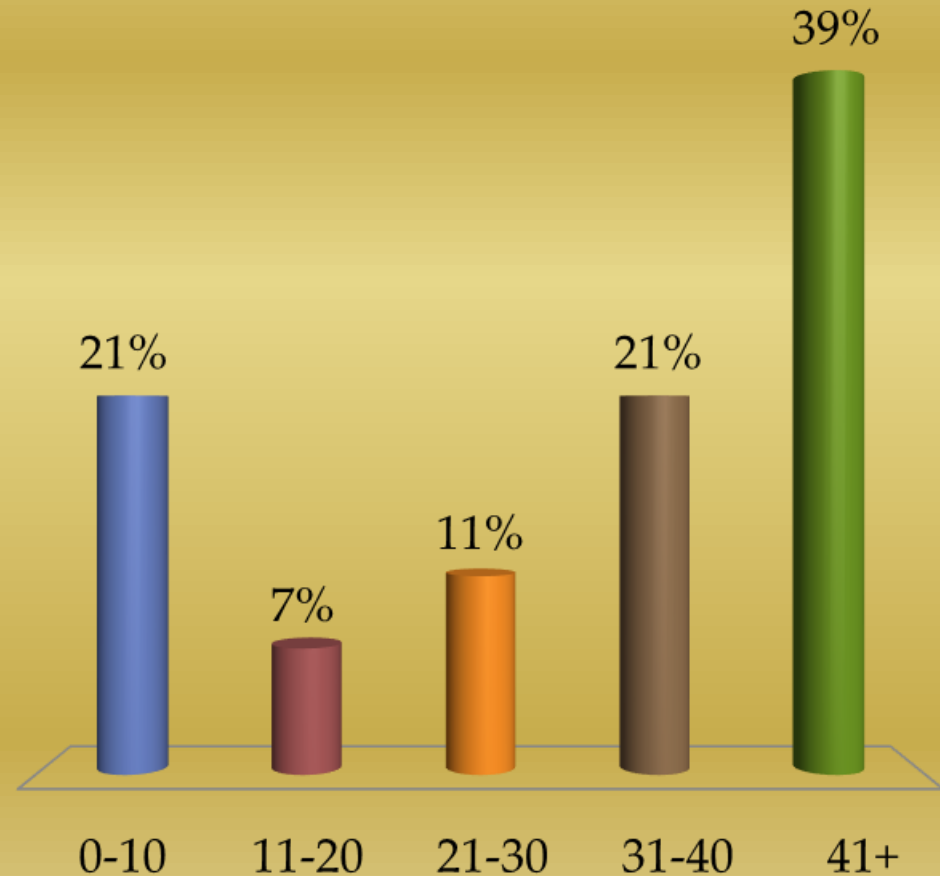
Who will be Idaho's next Governor?

- A. Brad Little
- B. Raul Labrador
- C. Tommy Alquist
- D. Paulette Jordan
- E. A.J. Balukoff



How many years has your farm raised alfalfa seed?

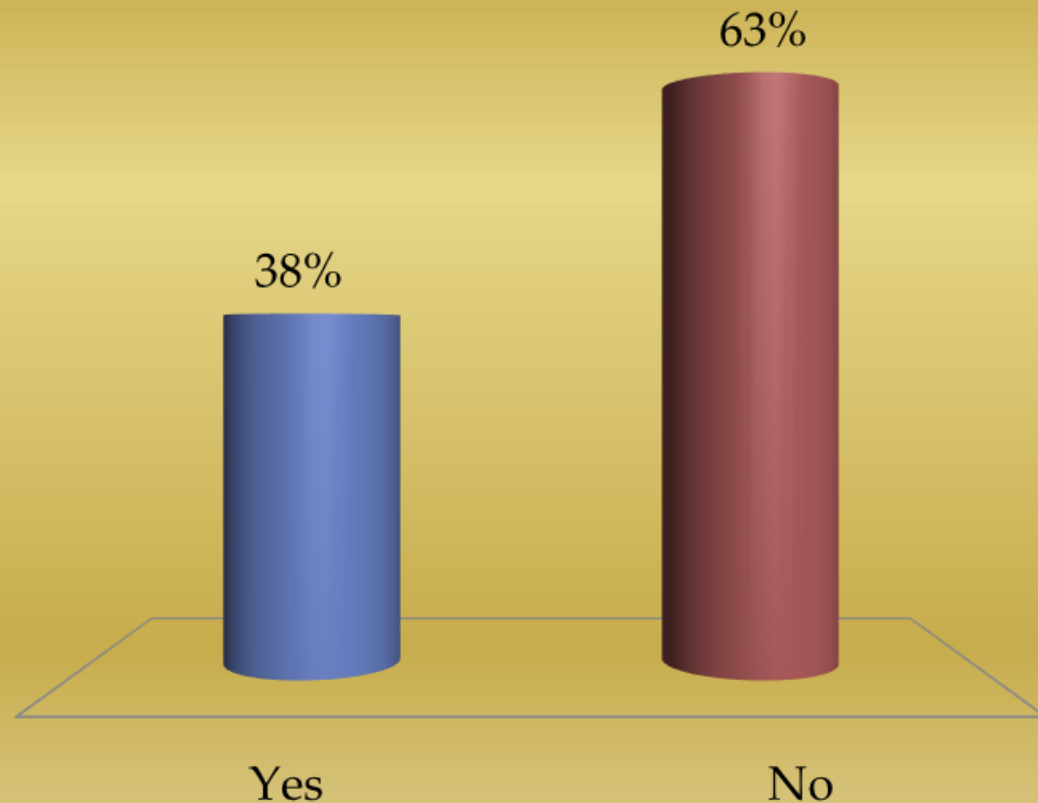
- A. 0-10
- B. 11-20
- C. 21-30
- D. 31-40
- E. 41+



Is alfalfa seed your main crop?

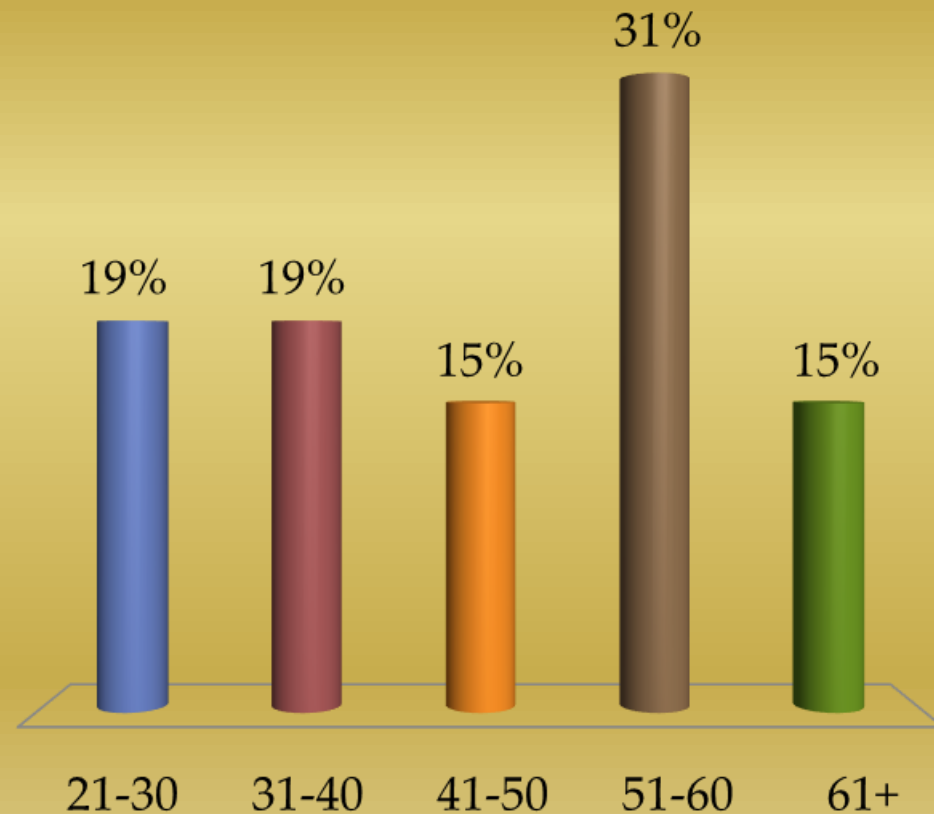
A. Yes

B. No



What is your age?

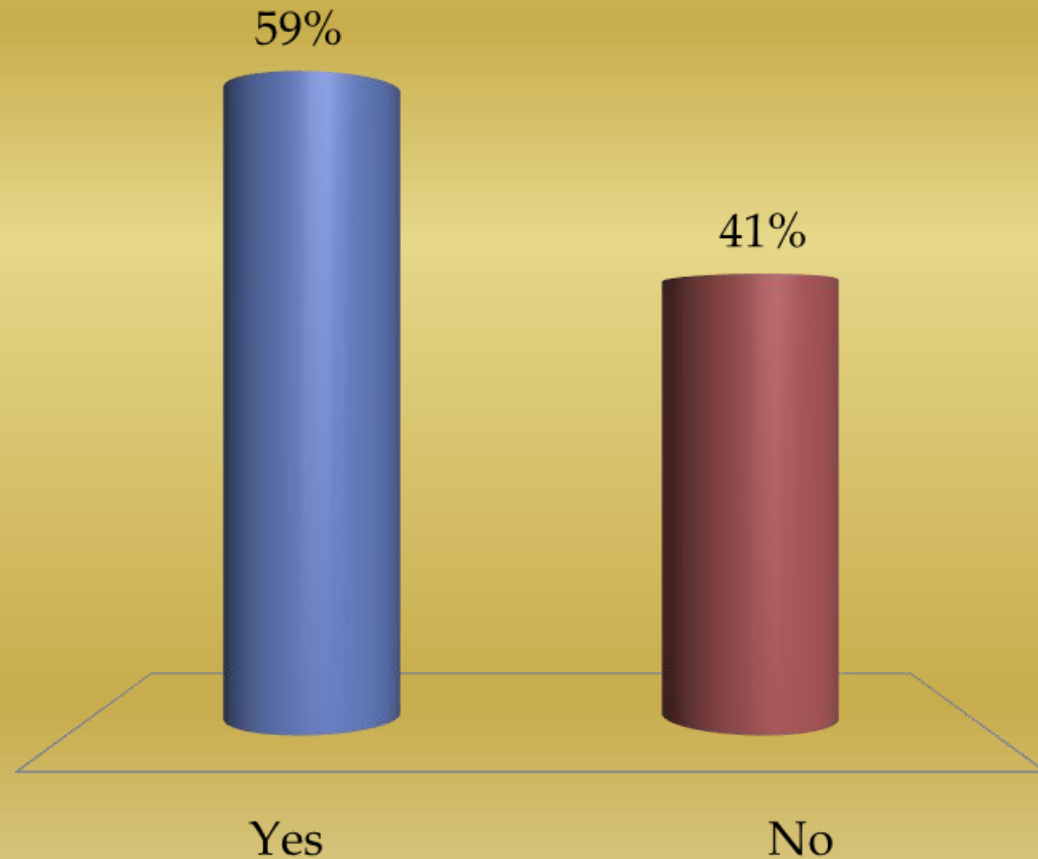
- A. 21-30
- B. 31-40
- C. 41-50
- D. 51-60
- E. 61+



Do you have a son/daughter/family member planning to succeed you?

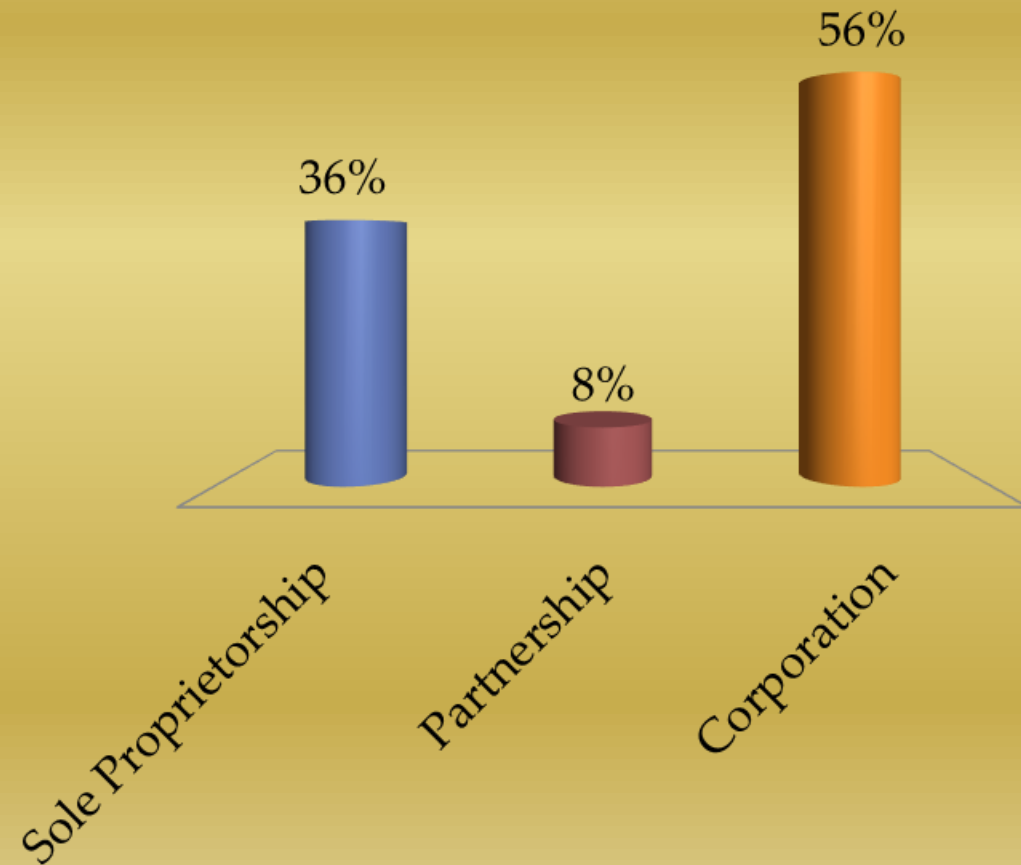
A. Yes

B. No



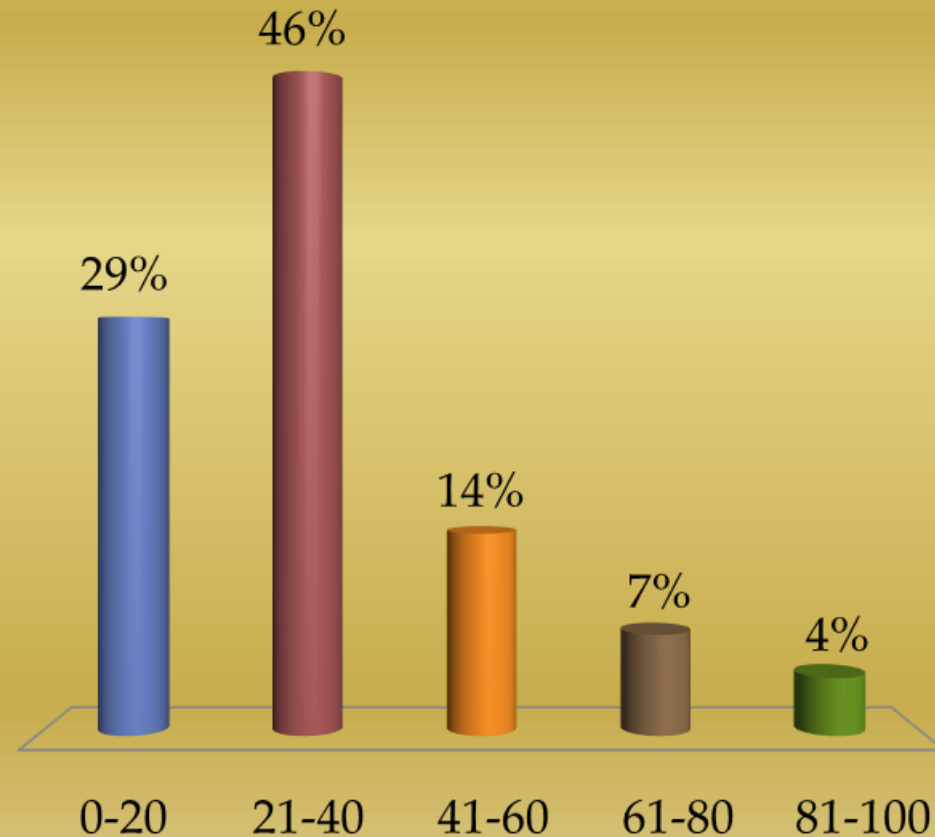
What form of farming operation do you have?

- A. Sole Proprietorship
- B. Partnership
- C. Corporation



What percent of your farm is planted to alfalfa seed?

- A. 0-20
- B. 21-40
- C. 41-60
- D. 61-80
- E. 81-100



How many gallons of bees/ac?

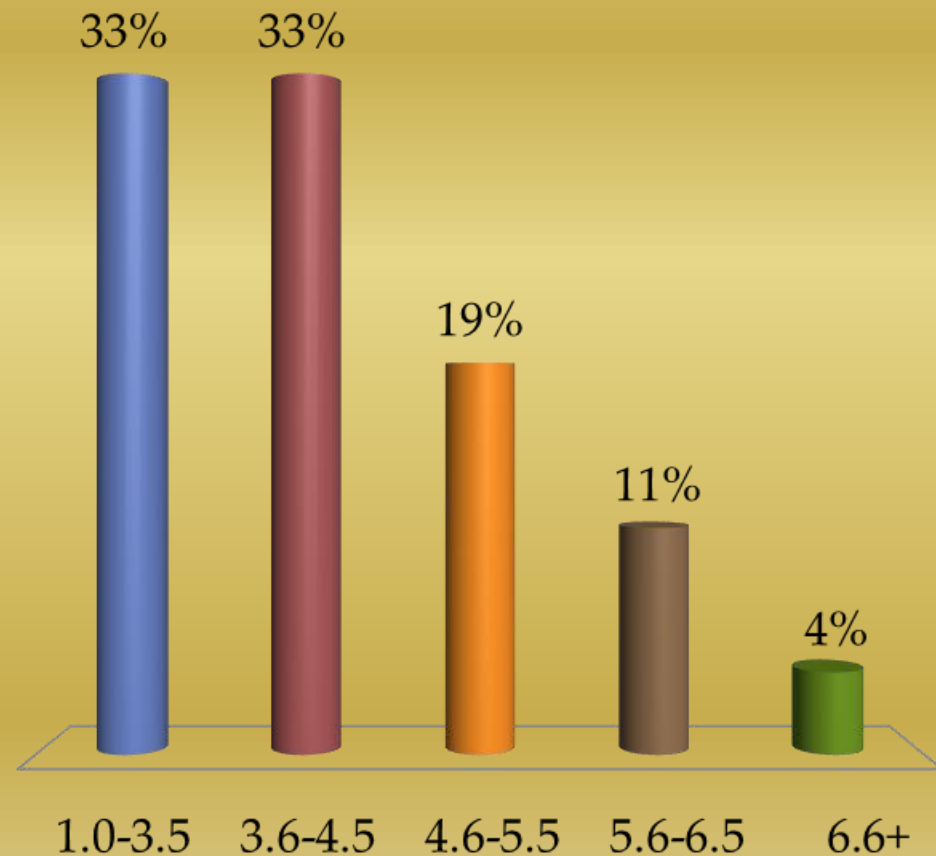
A. 1.0-3.5

B. 3.6-4.5

C. 4.6-5.5

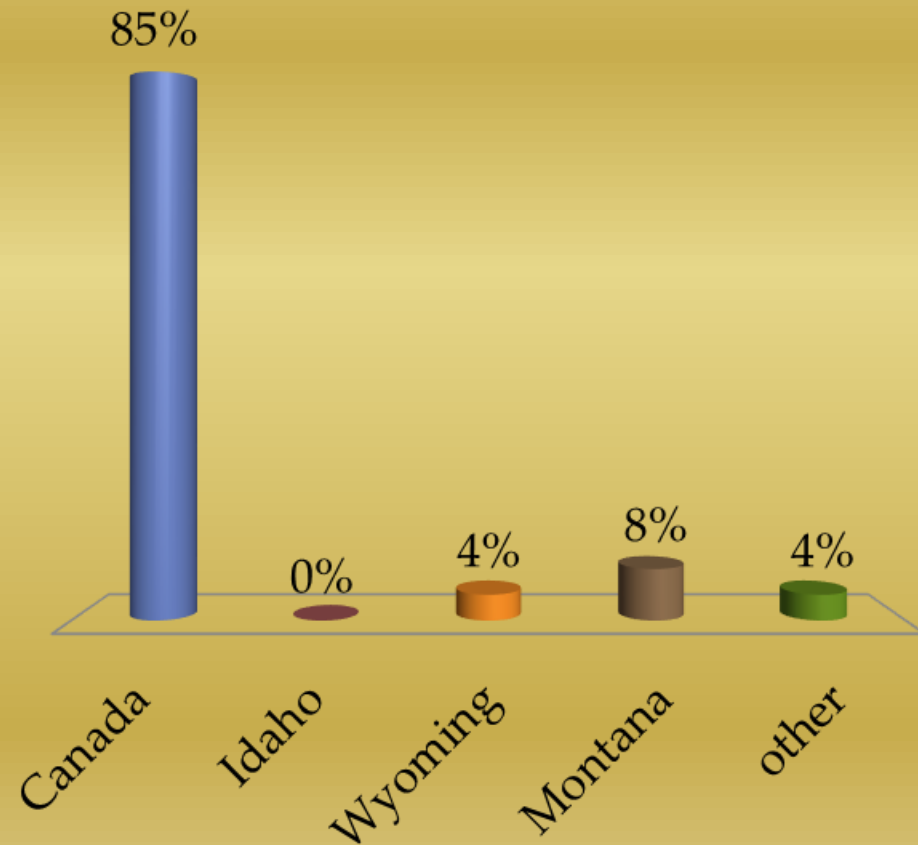
D. 5.6-6.5

E. 6.6+



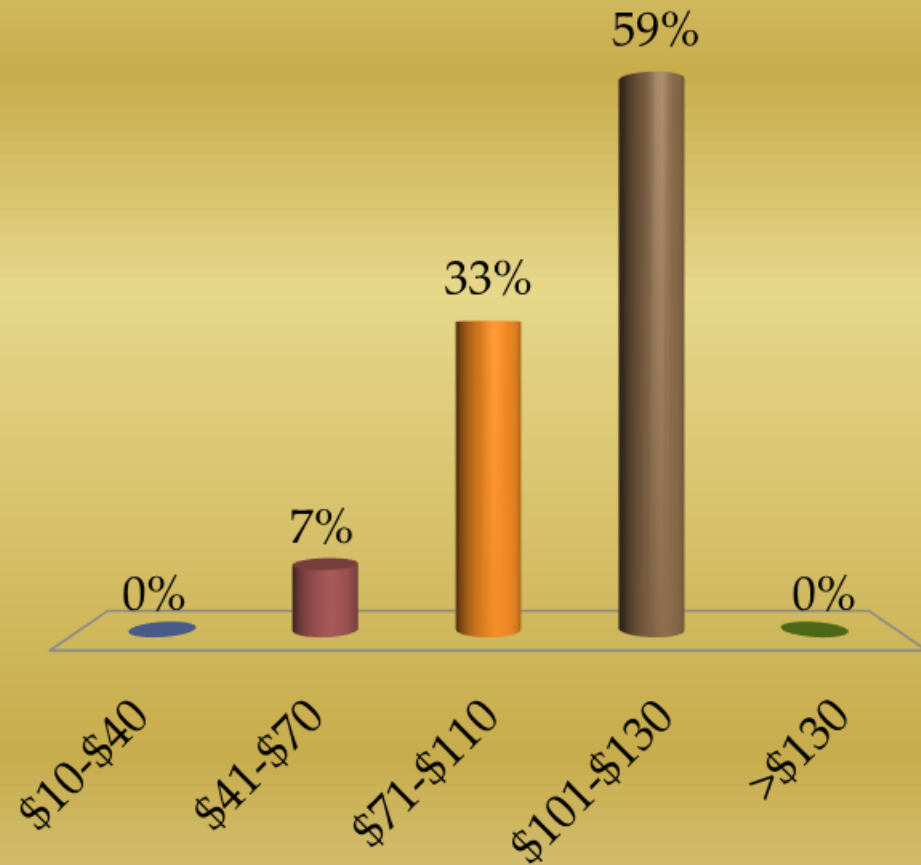
Where do you buy your bees?

- A. Canada
- B. Idaho
- C. Wyoming
- D. Montana
- E. other



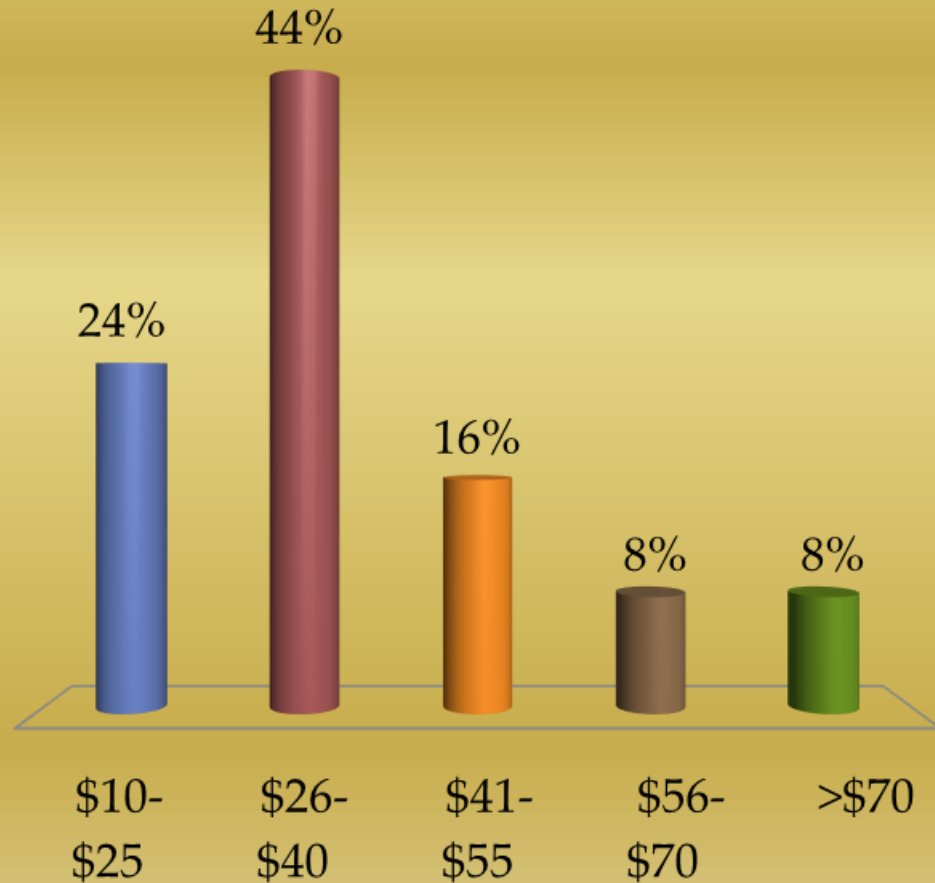
What did you pay for bees in 2017 (\$/gal)?

- A. \$10-\$40
- B. \$41-\$70
- C. \$71-\$110
- D. \$101-\$130
- E. >\$130



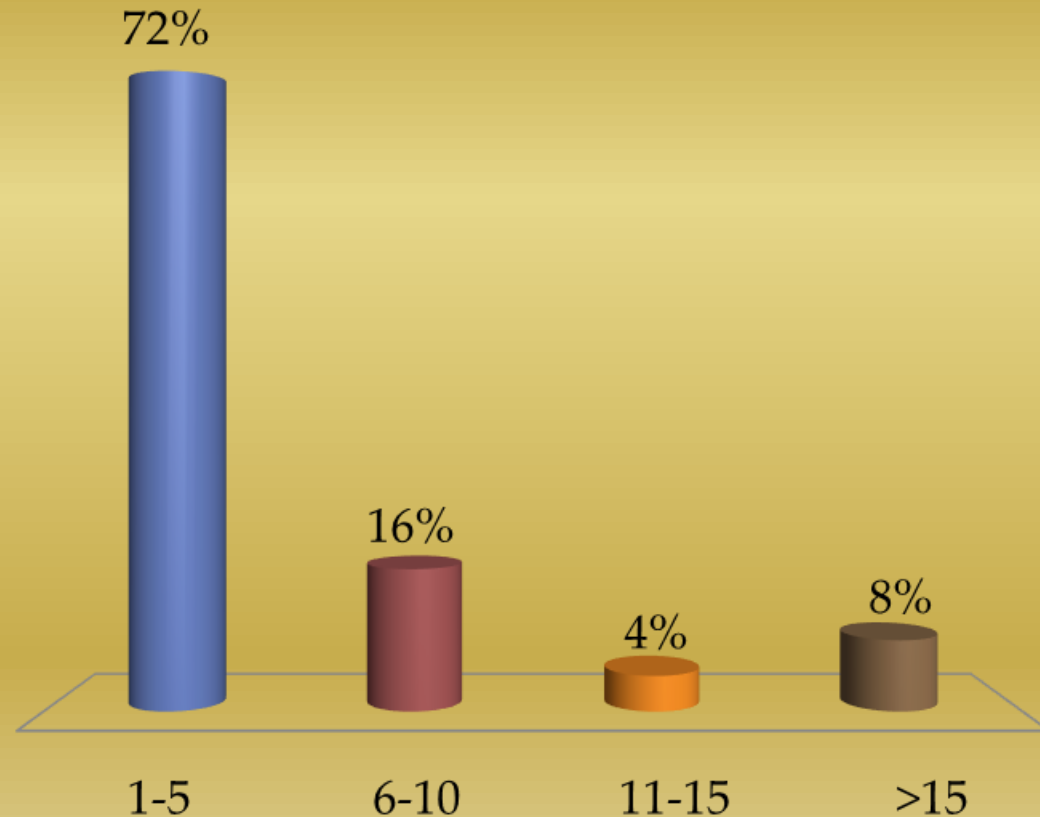
What do you expect to pay for bees in 2018 (\$/gal)?

- A. \$10-\$25
- B. \$26-\$40
- C. \$41-\$55
- D. \$56-\$70
- E. >\$70



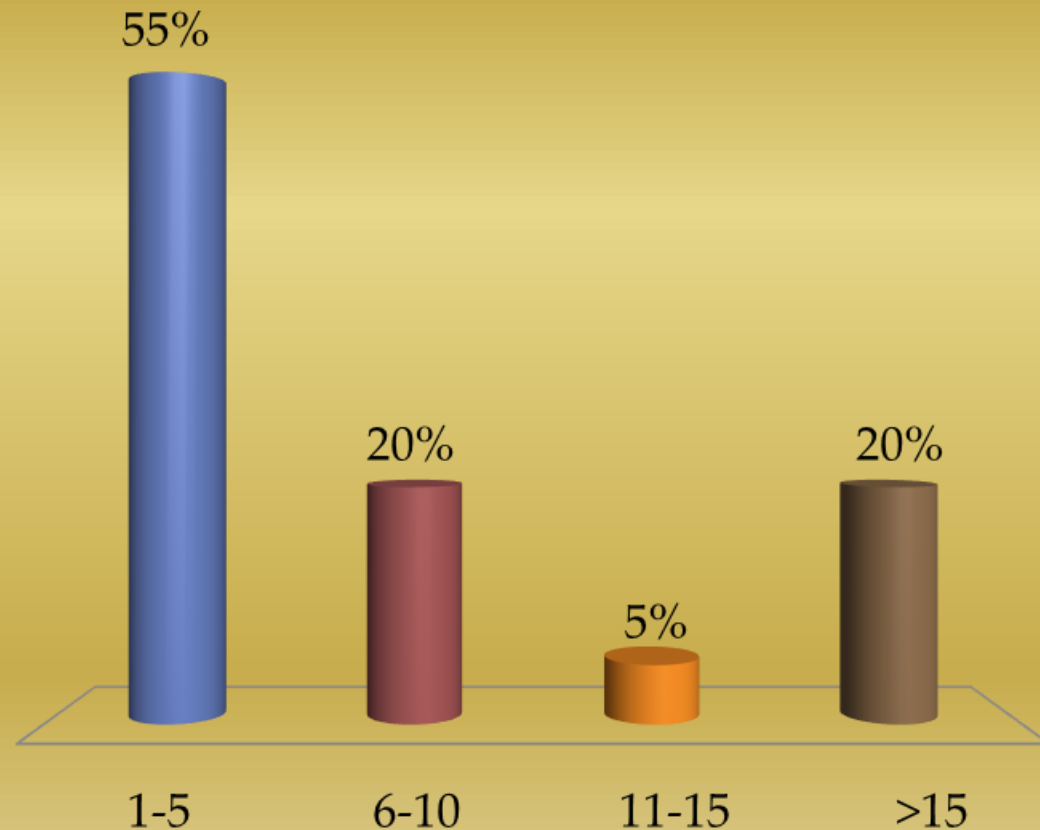
How many full time/year around employees do you have?

- A. 1-5
- B. 6-10
- C. 11-15
- D. >15



How many part time/seasonal employees do you have?

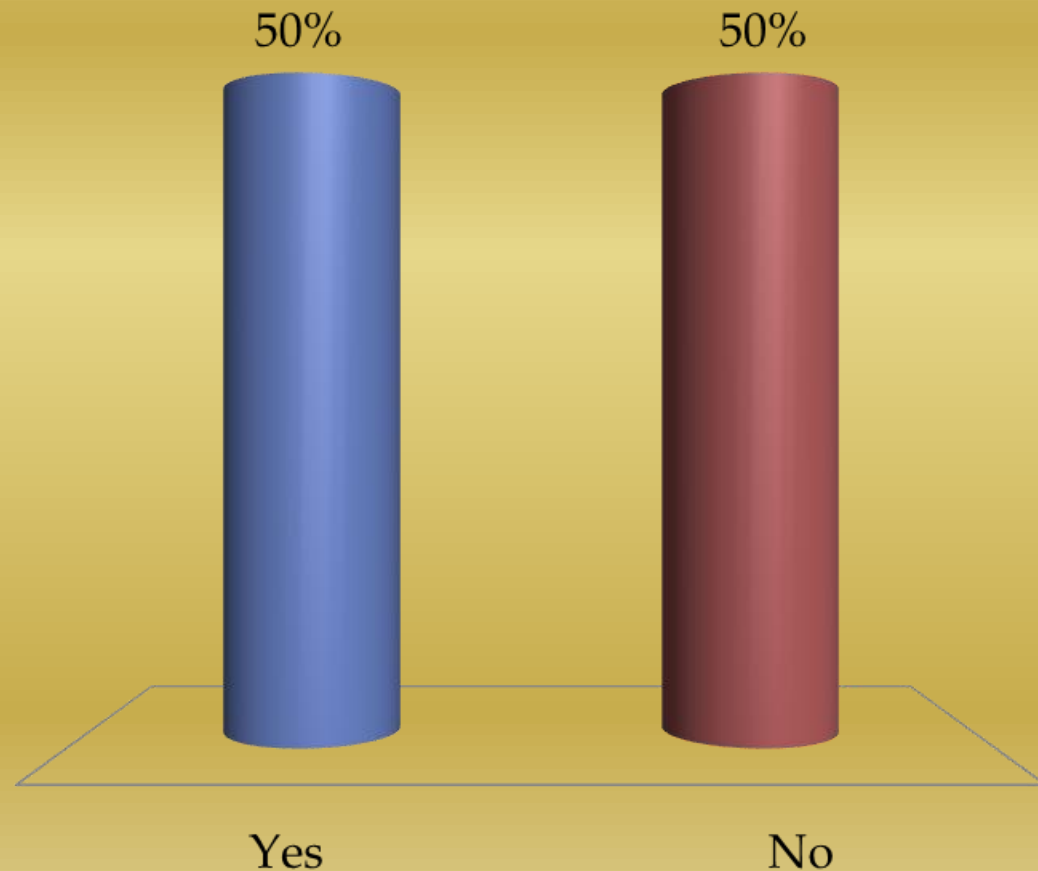
- A. 1-5
- B. 6-10
- C. 11-15
- D. >15



Do you have salaried employees?

A. Yes

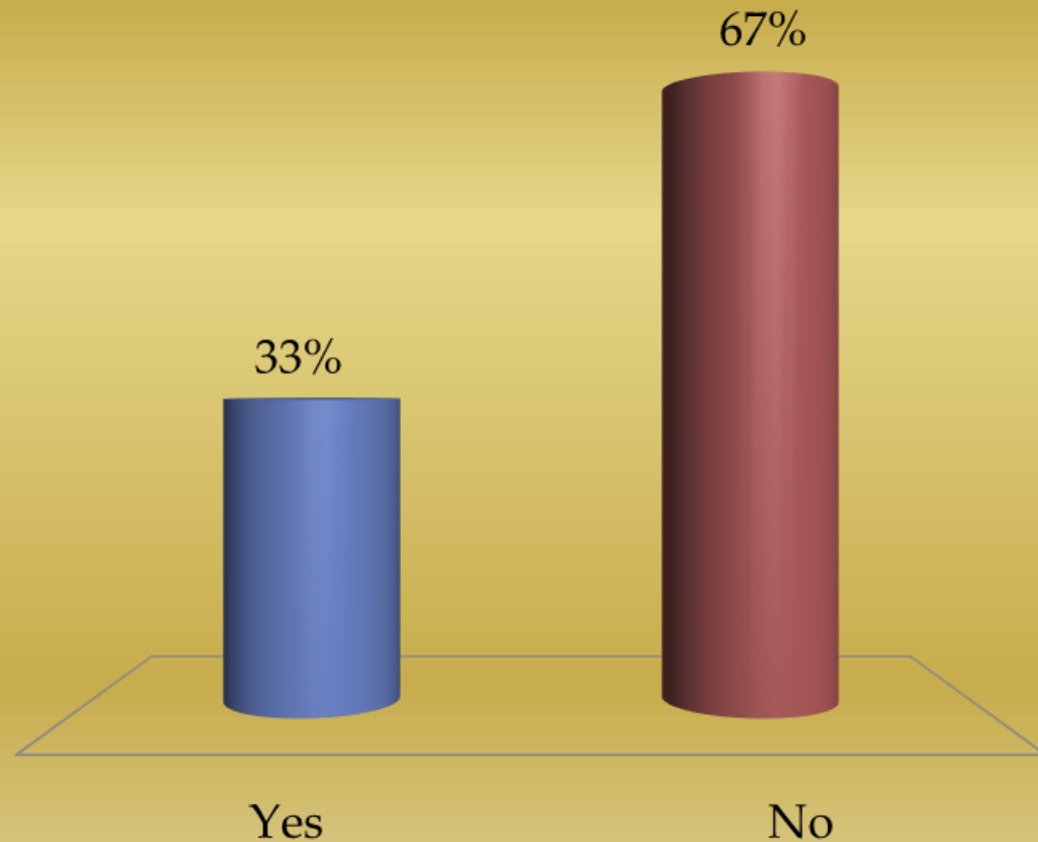
B. No



Do you offer health insurance to your employees?

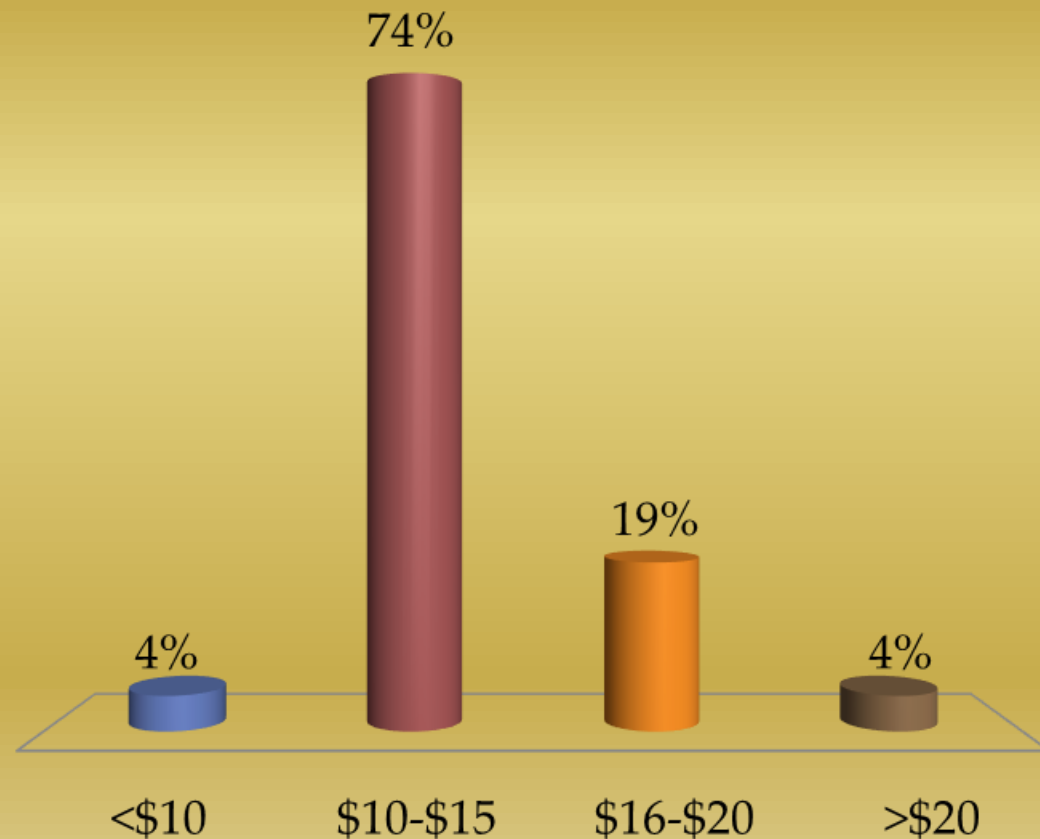
A. Yes

B. No



What would you estimate is the average hourly wage you pay (\$/hr)?

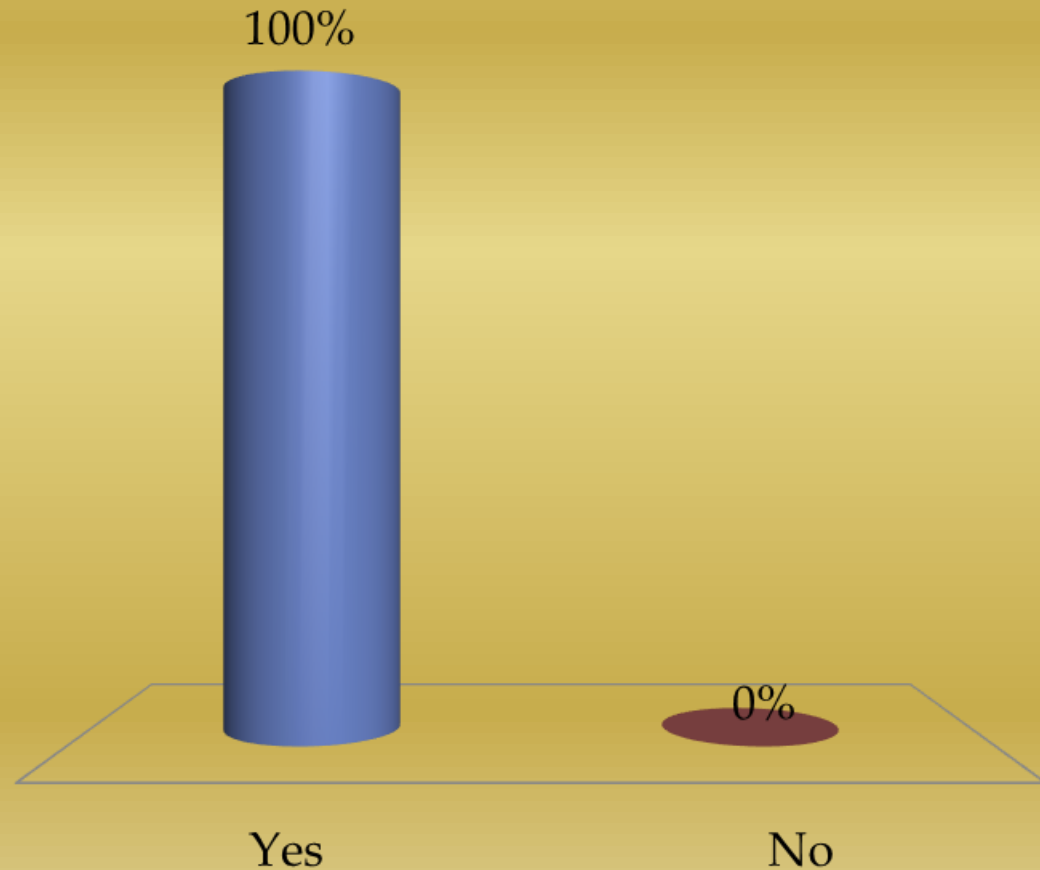
- A. <\$10
- B. \$10-\$15
- C. \$16-\$20
- D. >\$20



Do you sweep before spraying fields?

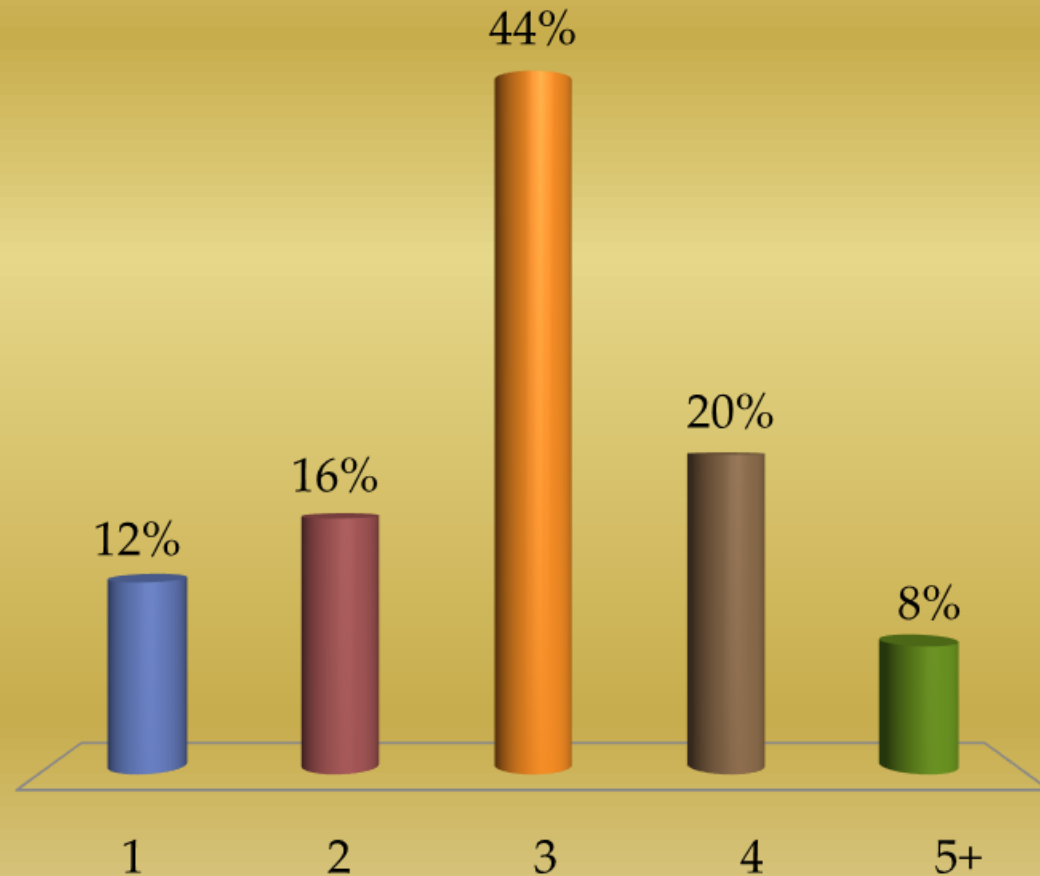
A. Yes

B. No



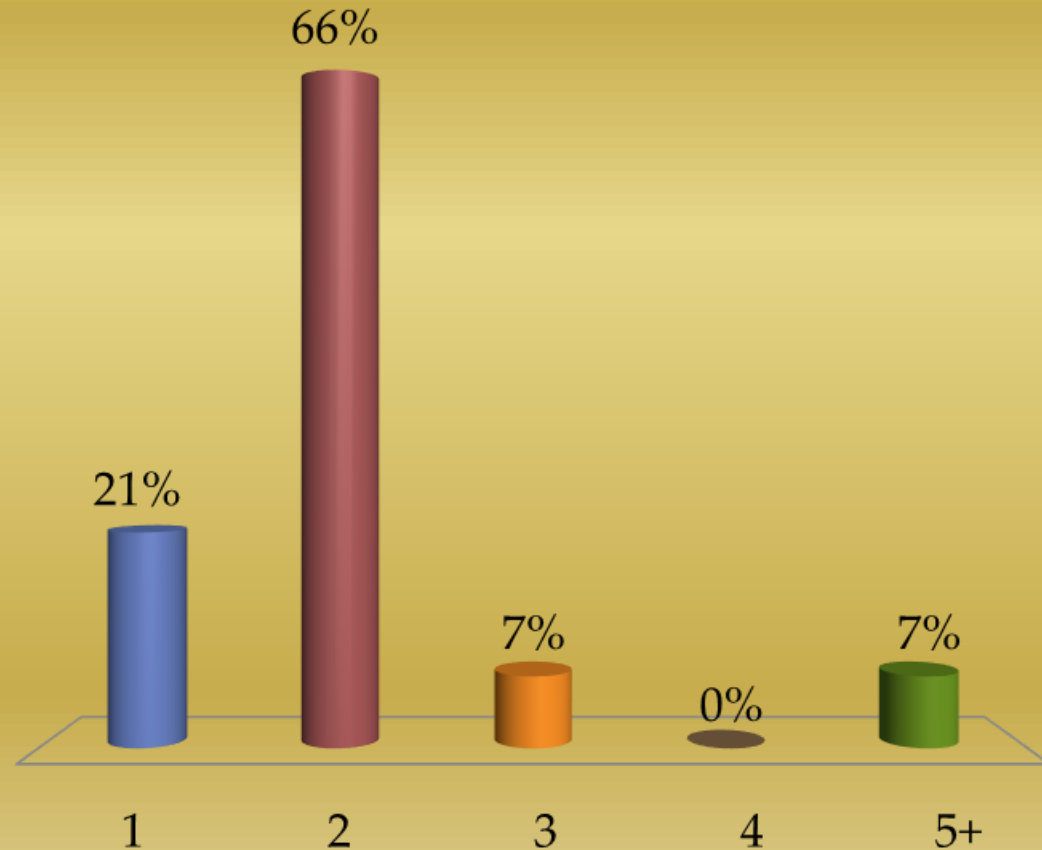
Average lifespan of a field?

- A. 1
- B. 2
- C. 3
- D. 4
- E. 5+



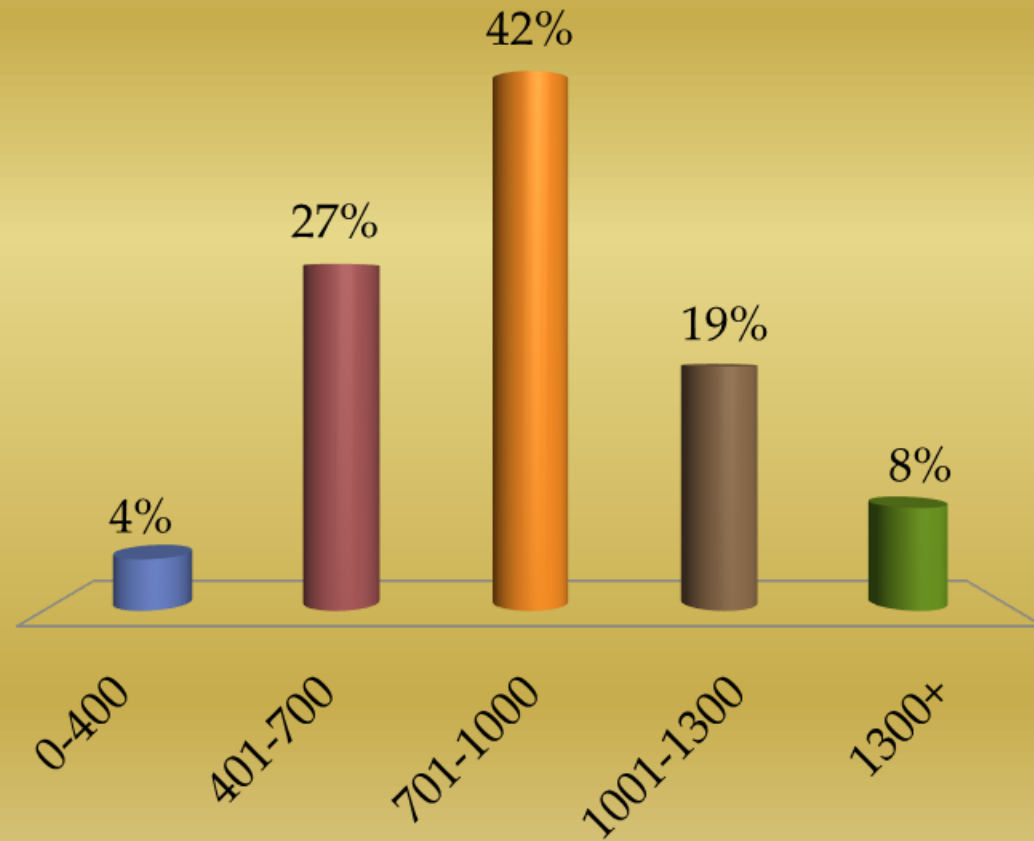
What year is the most productive?

- A. 1
- B. 2
- C. 3
- D. 4
- E. 5+



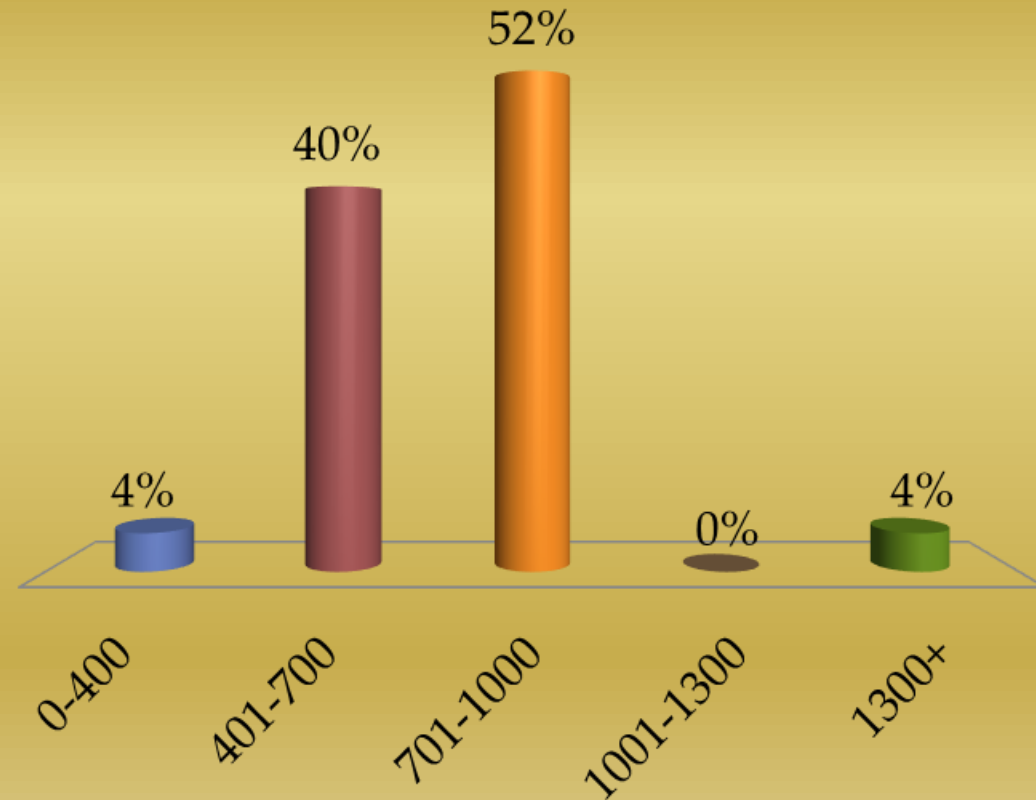
2017 Yields/ac (clean seed):

- A. 0-400
- B. 401-700
- C. 701-1000
- D. 1001-1300
- E. 1300+



What yield do you need to achieve to breakeven?

- A. 0-400
- B. 401-700
- C. 701-1000
- D. 1001-1300
- E. 1300+



Yield/ac (2017 vs historic):

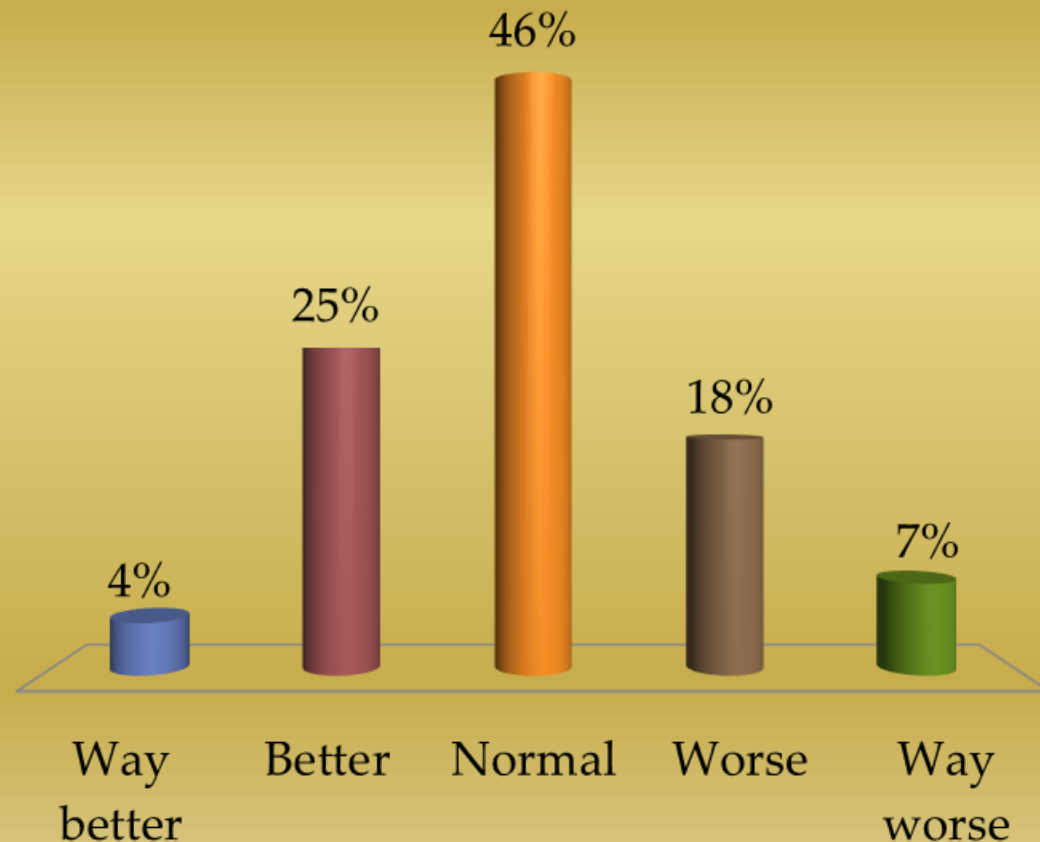
A. Way better

B. Better

C. Normal

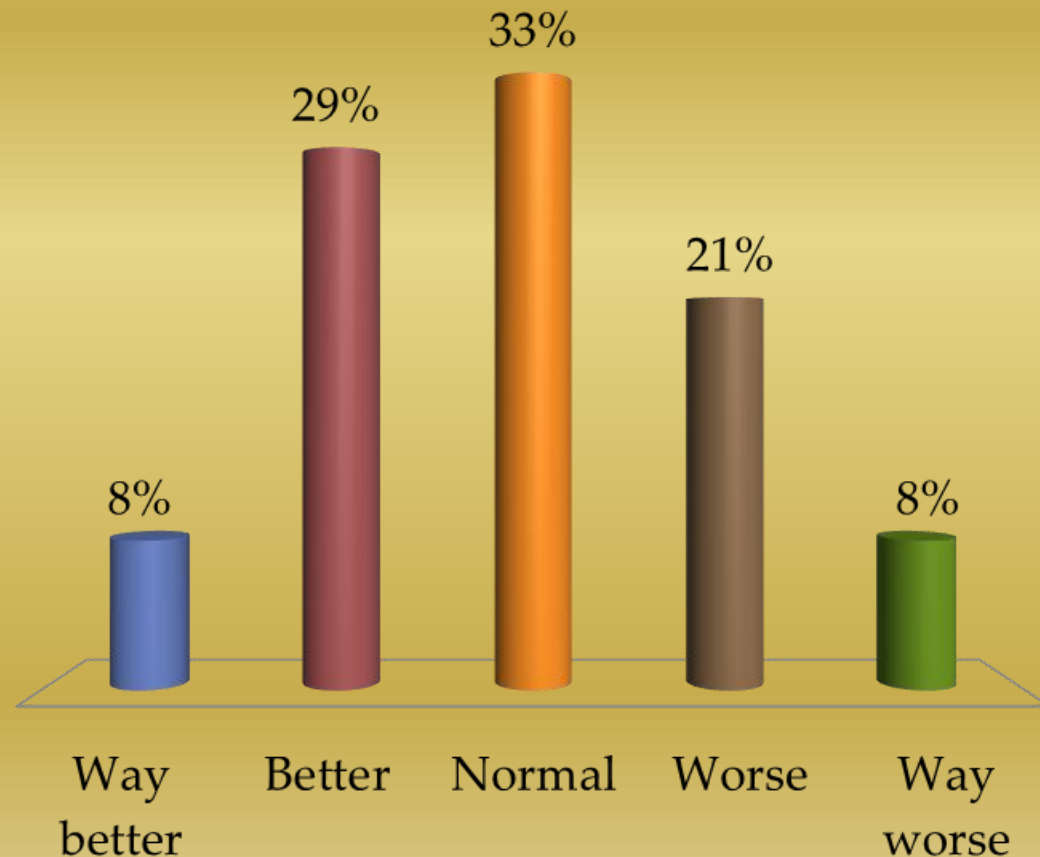
D. Worse

E. Way worse



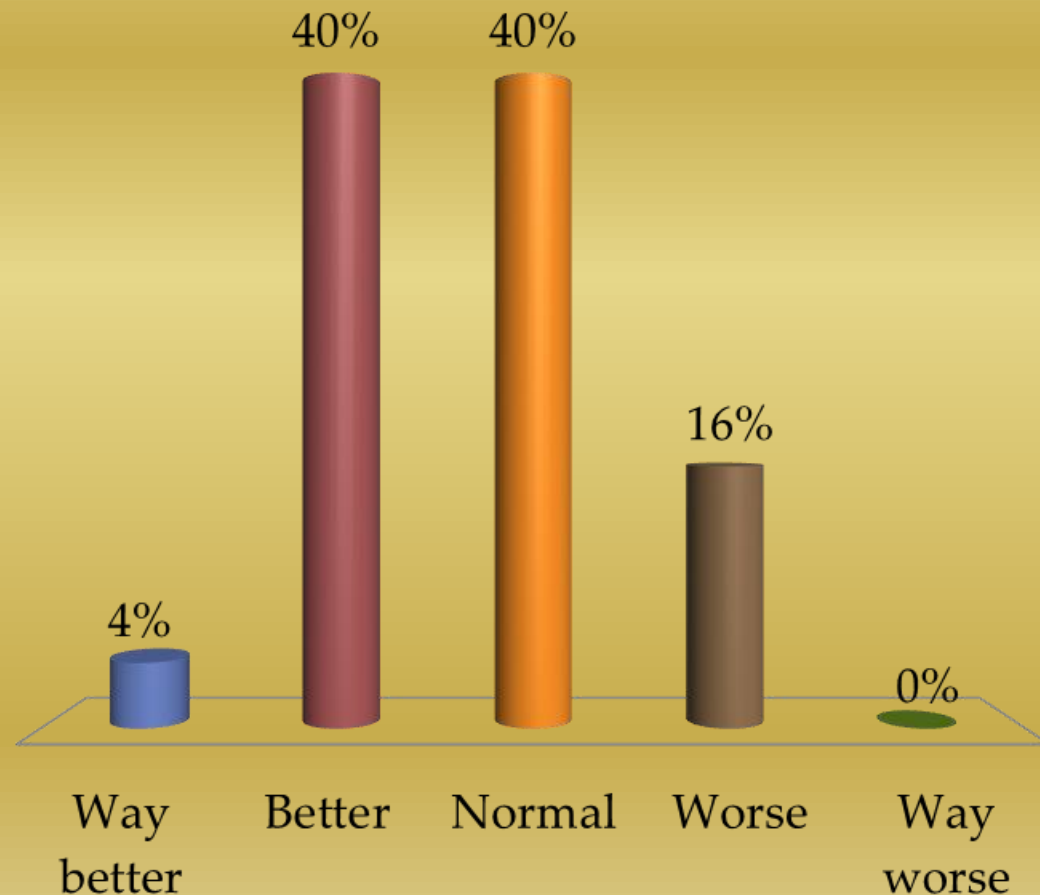
Lygus Pressure (2017 vs historic):

- A. Way better
- B. Better
- C. Normal
- D. Worse
- E. Way worse



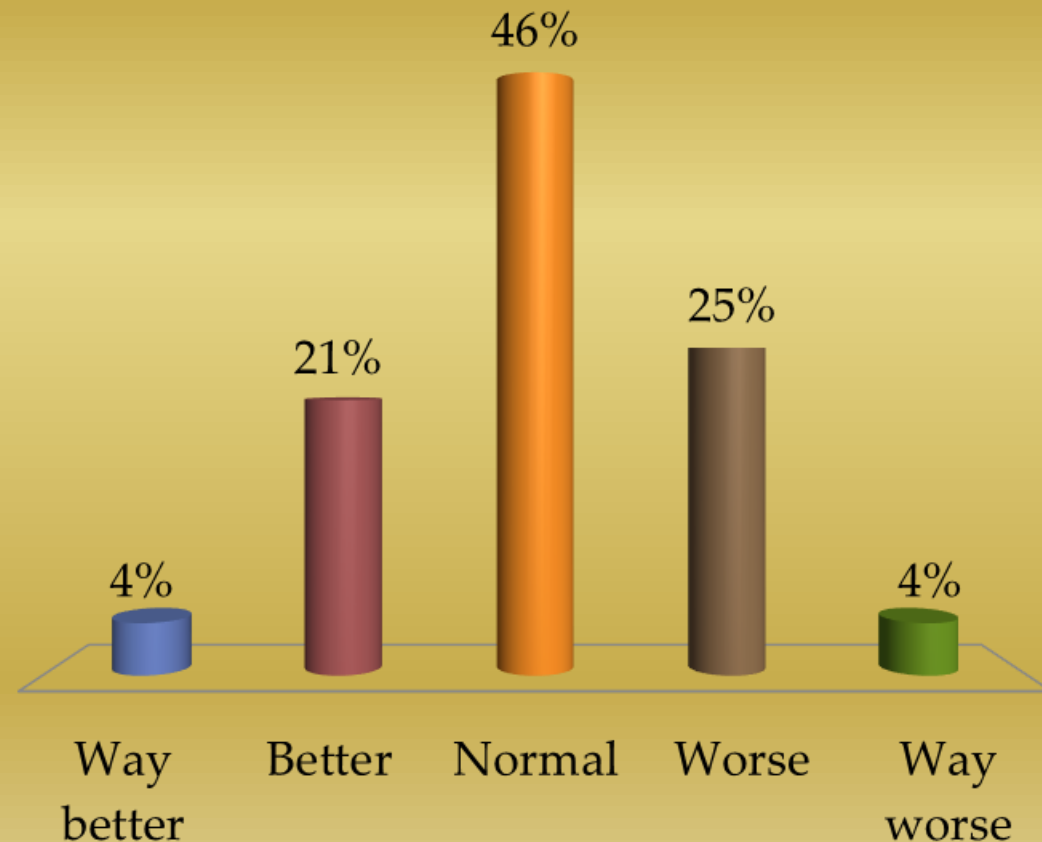
Aphid Pressure (2017 vs historic):

- A. Way better
- B. Better
- C. Normal
- D. Worse
- E. Way worse



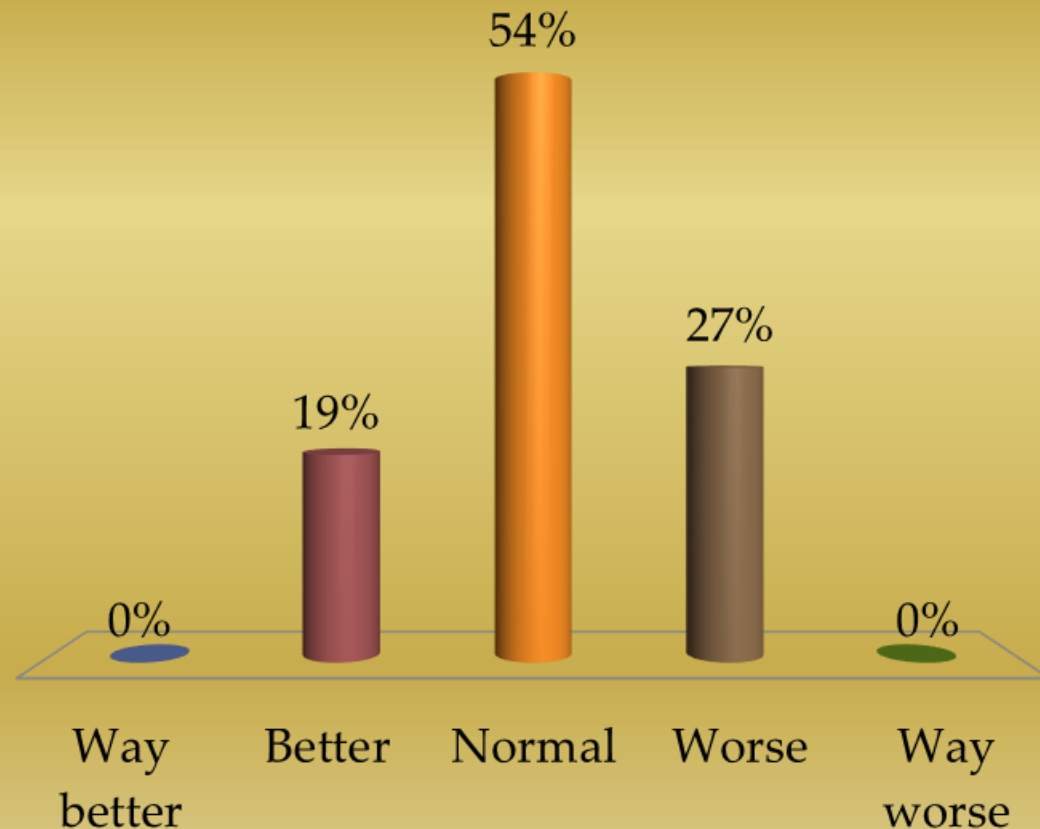
Mite Pressure (2017 vs historic):

- A. Way better
- B. Better
- C. Normal
- D. Worse
- E. Way worse



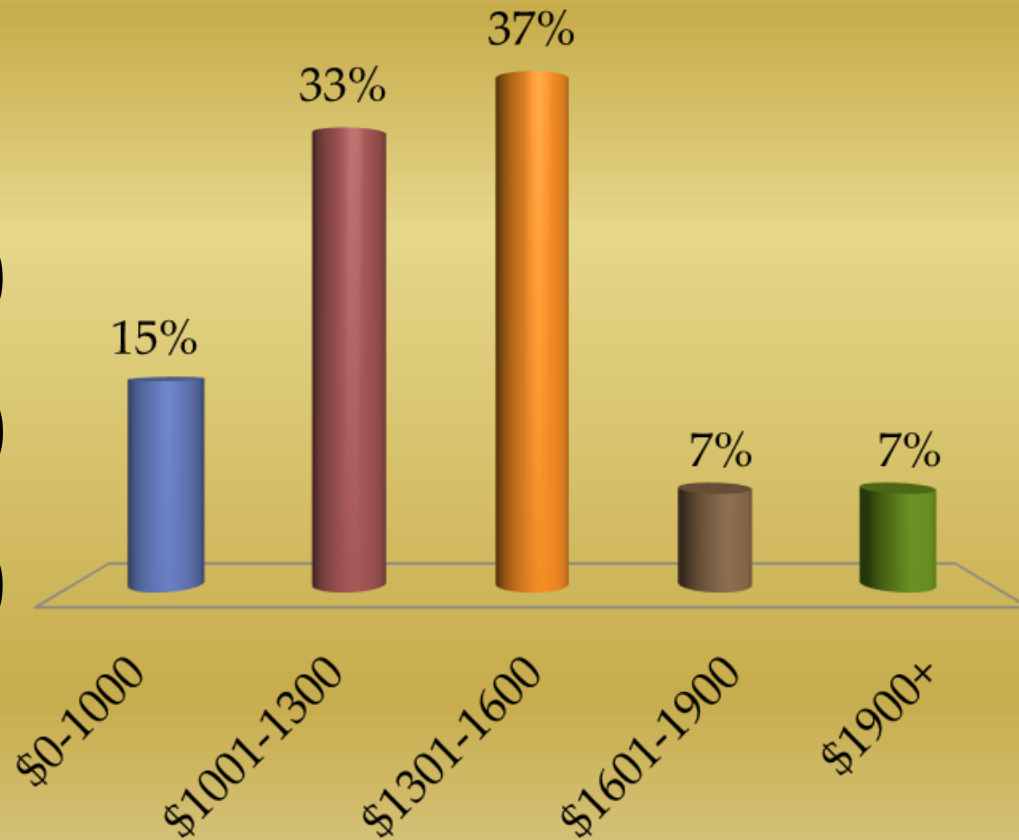
Weed Pressure (2017 vs historic):

- A. Way better
- B. Better
- C. Normal
- D. Worse
- E. Way worse



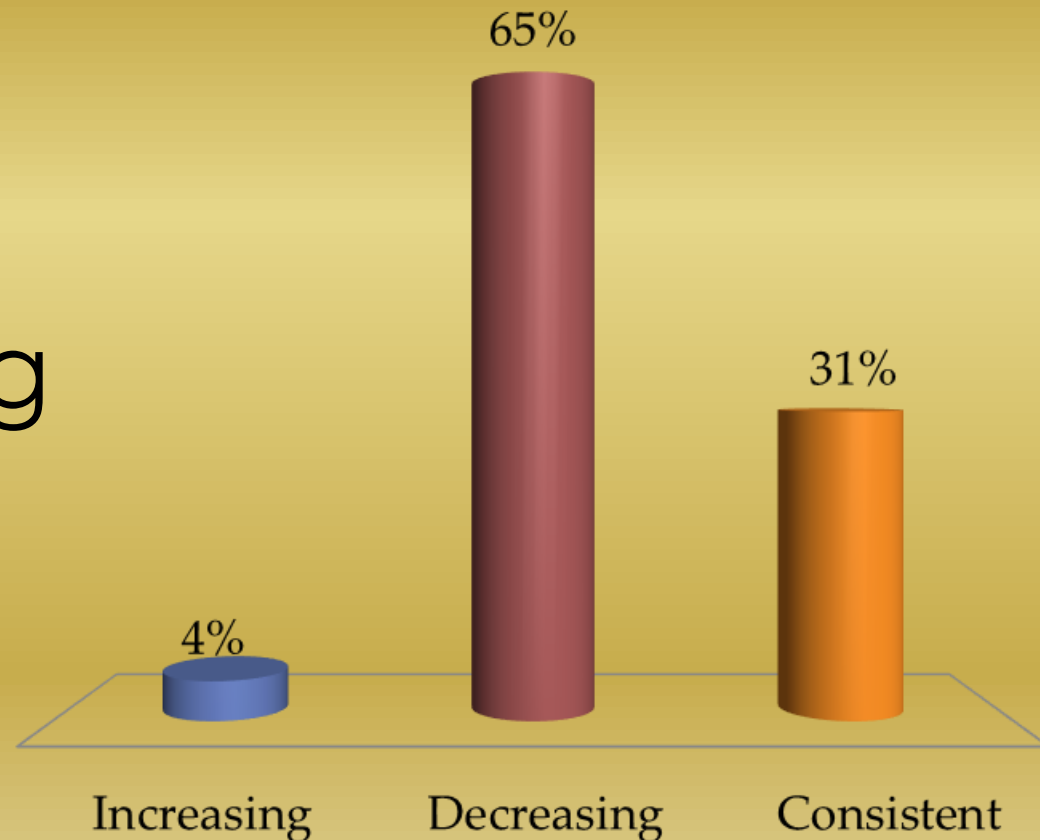
Production cost/ac:

- A. \$0-1000
- B. \$1001-1300
- C. \$1301-1600
- D. \$1601-1900
- E. \$1900+



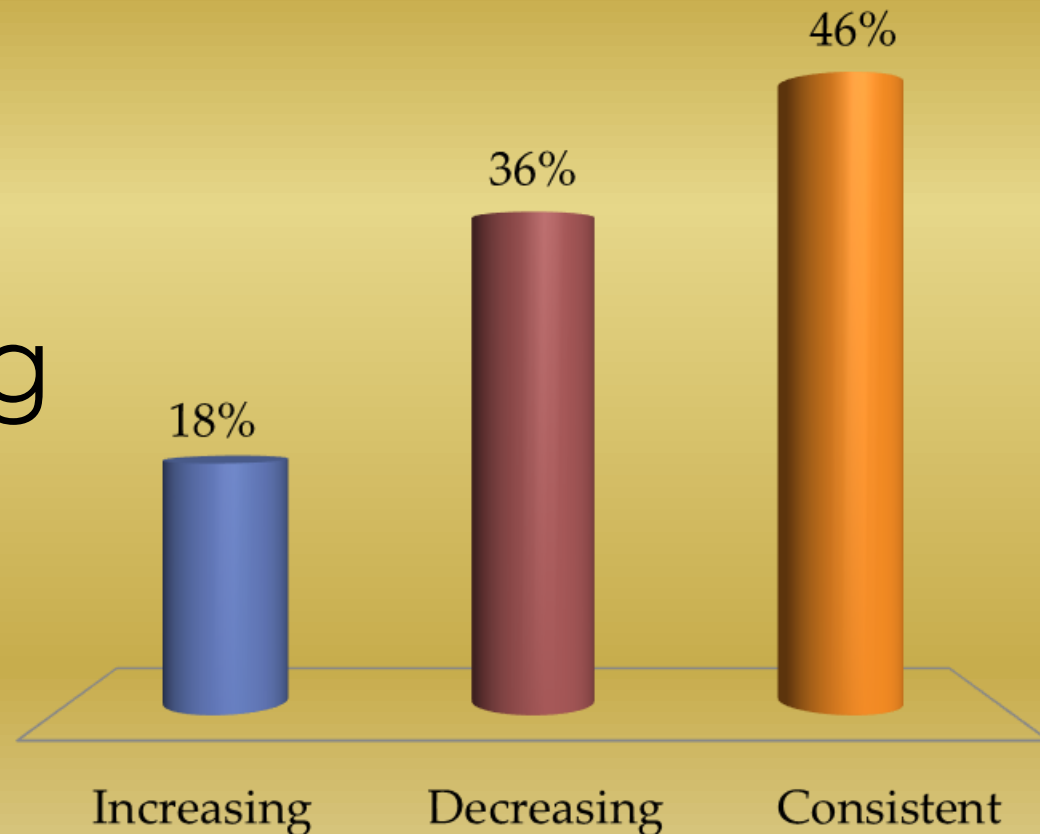
Acreage trends: is your acreage.....?

- A. Increasing
- B. Decreasing
- C. Consistent



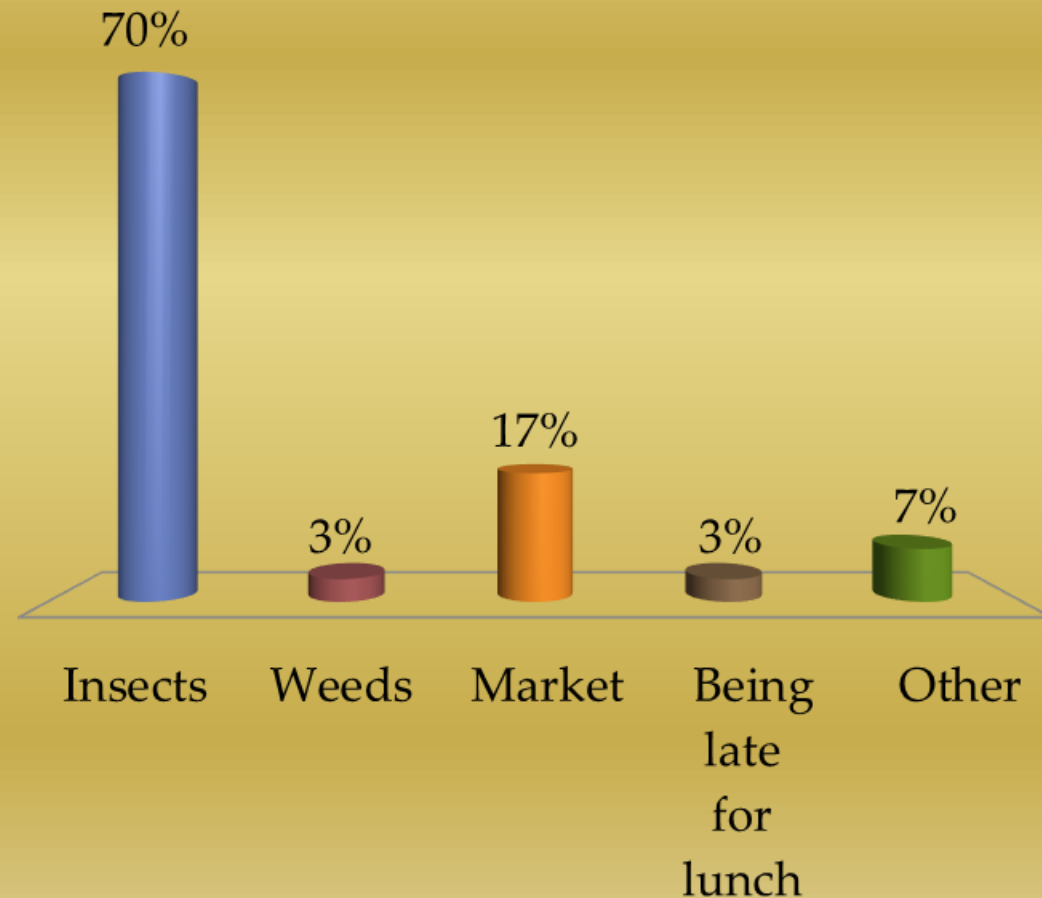
Yield trends: do you feel your yields are....?

- A. Increasing
- B. Decreasing
- C. Consistent



End of the day: Your biggest concern?

- A. Insects
- B. Weeds
- C. Market
- D. Being late for lunch
- E. Other



Thank you!

